

The background of the entire image is an underwater scene. In the foreground, a woman with long blonde hair, wearing a black swimsuit, is swimming horizontally towards the left. She is holding a bright orange flashlight in her right hand, which is pointed downwards towards a vibrant coral reef. The reef is covered in various types of coral and small, colorful fish. In the background, another diver is visible, swimming away from the viewer towards the surface. The water is clear and blue, with light rays filtering down from above.

highblue®

THE BRIGHTER IDEA

Pushing Innovation for greater intensity

2014

AL900WP



Li ion Rechargeable Battery Wide Beam LED Light

A very powerful output 900 lumens in an 85° light beam, it is a good focus light to come with red filter, yellow filter and clip for easy system setup.



4 Levels of brightness and SOS controlled by a reliable push button design



Battery level indicator built-in: Blue color / Green color / Red color / Flash Red color



18650 Li ion Rechargeable Battery

SPECIFICATIONS

Light source	: XML LED
Light output	: 90 Lm (level I), 225 Lm (level II) 450 Lm (level III), 900 Lm (level IV)
Casing material	: Aluminum alloy. Anti-corrosive anodized
Power source	: Li ion Rechargeable battery pack 18650
Angle of light beam	: 85° wide beam
Color temperature	: 6500K
Burn time	: 2hrs (level IV), 5 hrs(level III) 10 hrs(level II) and 20hrs (level I)



900
lumens



Removable red and yellow filter enhances focusing performances and warm color tone



Comes with the clip for easy system setup



Our light can fit in glove or pouch. Buy separately.

Maximum depth	: 100 m tested
Size :	Dia. 38.8 x L. 139mm
Weight in air	: 197g (including battery)
Buoyancy in seawater	: -104g (including battery)
Switching system	: Push button with battery indicator
Front glass	: Concave lens
Bottom	: Safety valve design

AL 900XWP



Li ion Rechargeable Battery Extra Wide Beam LED Light

A low cost video light with 120° wide angle of light beam, the light comes with red filter, yellow filter and clip for easy system setup.



4 Levels of brightness and SOS controlled by a reliable push button design



Battery level indicator built-in: Blue color / Green color / Red color / Flash Red color



18650 Li ion Rechargeable Battery



Comes with the clip for easy system setup



Removable red and yellow filter enhances focusing performances and warm color tone



Our light can fit in glove or pouch. Buy separately.

SPECIFICATIONS

Light source	: XML LED
Light output	: 90 Lm (level I), 225 Lm (level II) 450 Lm (level III), 900 Lm (level IV)
Casing material	: Aluminum alloy. Anti-corrosive anodized
Power source	: Li ion Rechargeable battery pack 18650
Angle of light beam	: 120° wide beam
Color temperature	: 6500K
Burn time	: 2hrs (level IV), 5 hrs(level III) 10 hrs(level II) and 20hrs (level I)
Maximum depth	: 100 m tested
Size :	Dia. 38.8 x L. 132.5mm
Weight in air	: 177g (including battery)
Buoyancy in seawater	: -89g (including battery)
Switching system	: Push button with battery indicator
Front glass	: Tempered optical glass
Bottom	: Safety valve design

AL900NP



Li ion Rechargeable Battery Narrow Beam LED Light

A very powerful output 900 lumens in an 10° light beam such as lightning in the silent sky.



4 Levels of brightness and SOS controlled by a reliable push button design



Battery level indicator built-in: Blue color / Green color / Red color / Flash Red color



18650 Li ion Rechargeable Battery



Our light can fit in glove or pouch. Buy separately.

SPECIFICATIONS

Light source	: XML LED
Light output	: 90 Lm (level I), 225 Lm (level II) 450 Lm (level III), 900 Lm (level IV)
Casing material	: Aluminum alloy. Anti-corrosive anodized
Power source	: Li ion Rechargeable battery pack 18650
Angle of light beam	: 10° narrow beam
Color temperature	: 6500K
Burn time	: 2hrs (level IV), 5 hrs(level III) 10 hrs(level II) and 20hrs (level I)
Maximum depth	: 100 m tested
Size :	Dia. 35 x L. 150.1mm
Weight in air	: 197g (including battery)
Buoyancy in seawater	: -96g (including battery)
Switching system	: Push button with battery indicator
Front glass	: Tempered optical glass
Bottom	: Safety valve design

CF 900P



Li ion Rechargeable Battery Changeable Focus LED Light

Continuing the success of our popular CF 900, this 'younger-brother' version of the smaller focusable light pumps out a stunning 900 lumens. 4 levels brightness and SOS functions are controlled by push button with battery indicator.



18650 Li ion Rechargeable Battery



4 Levels of brightness and SOS controlled by a reliable push button design



Battery level indicator built-in: Blue color / Green color / Red color / Flash Red color



Twist the front to change the focus (Turning force increases with depth)

SPECIFICATIONS

Light source	: XML LED
Light output	: 90 Lm (level I), 225 Lm (level II) 450 Lm (level III), 900 Lm (level IV)
Casing material	: Aluminum alloy. Anti-corrosive anodized
Power source	: Li ion Rechargeable battery pack 18650
Angle of light beam	: 7° narrow beam to 37° wide beam
Color temperature	: 6500K
Burn time	: 2hrs (level IV), 5 hrs (level III) 10 hrs (level II) and 20hrs (level I)
Maximum depth	: 100 m tested
Size :	Dia. 39.5 x L. 175.1 mm
Weight in air	: 262g (including battery)
Buoyancy in seawater	: -134g (including battery)
Switching system	: Push button with battery indicator
Front glass	: Tempered optical glass
Bottom	: Safety valve design

TL 2500P

Li ion Rechargeable Battery LED Tech Light

This self-contained tech-light pumps out 2500 lumens in a very compact body with the reliable push button with battery indicator, it allows you to choose 4 levels of brightness and SOS function.



Sturdy Goodman Glove for handy Tech-divide operation



32650 Li ion Rechargeable Battery



4 Levels of brightness and SOS controlled by a reliable push button design



Battery level indicator built-in: Blue color / Green color / Red color / Flash Red color



Ergonomic aluminum handle comes in a package

SPECIFICATIONS

Light source	: 3 x XML LED
Light output	: 250 Lm (level I), 625 Lm (level II) 1250 Lm (level III) , 2500 Lm (level IV)
Casing material	: Aluminum alloy. Anti-corrosive anodized
Power source	: Li ion Rechargeable battery pack 32650
Angle of light beam	: 10° narrow beam
Color temperature	: 6500K
Burn time	: 1.5hrs (level IV), 3 hrs(level III) 6 hrs(level II) and 15hrs (level I)
Maximum depth	: 100 m tested
Size :	Dia. 63 x L. 138.6mm
Weight in air	: 457g (including battery)
Buoyancy in seawater	: -227g (including battery)
Switching system	: Push button with battery indicator
Front glass	: Tempered optical glass
Bottom	: Safety valve design

VL 2500P



Li ion Rechargeable Battery LED Video Light



Built-in red color led enhances focusing performance



Sturdy glove for hands-free operation underwater



Battery level indicator built-in: Blue color / Green color / Red color / Flash Red color



4 levels of brightness for Flood beam mode, 1 level of brightness of Red color mode and SOS controlled by a reliable push button design

SPECIFICATIONS

Light source	: 6 x XML LED + 4 x XPE Red LED
Light output	: 250 Lm (level I), 625 Lm (level II) , 1250 Lm (level III) , 2500 Lm (level IV)
Light output (Red color mode)	: 200 Lm
Casing material	: Aluminum alloy. Anti-corrosive anodized
Power source	: Li ion Rechargeable battery pack 32650
Angle of light beam	: 120° wide beam
Color temperature	: 6500K
Burn time	: 1.5hrs (level IV), 3 hrs(level III) 6 hrs(level II) and 15hrs (level I)
Maximum depth	: 100 m tested

VL 2500P is the new member of our video light family. It is a self-contained, compact and powerful all-purpose diving light best suited for video light. It generates 2500 Lumens and offers 10%, 25%, 50% and 100% output levels through the reliable push button. This light is also built-in red color mode for viewing shy little creatures and enhancing focusing performance.

2500
lumens

**Best
For Video**
120°
Angle of light
beam



32650 Li ion
Rechargeable Battery



Removable yellow filter,
enhances warmer color
tone



Comes with ball joint
for easy system setup



Size :	52.5 x L. 121.1mm
Weight in air	: 359g (including battery)
Buoyancy in seawater	: -184g (including battery)
Switching system	: Push button with battery indicator
Front glass	: Tempered optical glass
Bottom	: Safety valve design

VTL 2500P



Li ion Rechargeable Battery LED Video / Tech Light

New for 2014! A 2500 lumens wide beam video light with dual spot and flood beam mode, even built-in red color mode. At flood beam mode, it provides 120° wide beam. At spot beam mode, it provides 10° narrow beam.



Sturdy glove for hands-free operation underwater



Battery level indicator built-in: Blue color / Green color / Red color / Flash Red color



4 levels of brightness for Flood beam mode, 1 level of brightness for Spot beam mode and 1 level of brightness for Red color mode controlled by a reliable push button design

SPECIFICATIONS

Light source	: 7 x XML LED + 2 x XPE Red LED
Light output (Flood beam mode)	: 250 Lm (level I), 625 Lm (level II) 1250 Lm (level III) , 2500 Lm (level IV)
Light output (Spot beam mode)	: 900 Lm
Light output (Red color mode)	: 100 Lm
Casing material	: Aluminum alloy. Anti-corrosive anodized
Power source	: Li ion Rechargeable battery pack 32650
Angle of light beam	: 120° wide beam and 10° narrow beam
Color temperature	: 6500K
Burn time	: 1.5hrs (level IV), 3 hrs(level III) 6 hrs(level II) and 15hrs (level I)



120°
Wide beam
10°
Narrow beam



Built-in red color led enhances focusing performance



Angle of light beam



32650 Li ion
Rechargeable Battery



Removable yellow filter,
enhances warmer color
tone



Comes with ball joint
for easy system setup



Maximum depth	: 100 m tested
Size :	Dia. 55.5 x L. 143.6mm
Weight in air	: 461g (including battery)
Buoyancy in seawater	: -233g (including battery)
Switching system	: Push button with battery indicator
Front glass	: Tempered optical glass
Bottom	: Safety valve design

VL 15000P



**Li ion Rechargeable Battery Super Power
LED Video Light**



**15000
lumens**



36pcs XML LED
to provide
15000 lumens




4 levels of brightness for
Flood beam mode,
1 level of brightness of
Red color mode and SOS
controlled by a reliable
push button design

SPECIFICATIONS

Light source	: 36 x XML LED + 10 x XPE Red LED
Light output	: 1500 Lm (level I), 3750 Lm (level II) 7500 Lm (level III) , 15000 Lm (level IV)
Light output (Red color mode)	: 1000 Lm
Casing material	: Aluminum alloy. Anti-corrosive anodized
Power source	: Li ion Rechargeable battery pack
Angle of light beam	: 160° wide beam

Never in the history of underwater photography has a light this size and weight produced such amount of light without external battery pack.



**The Most
Brightness
15000
LUMENS**

Angle of light beam

**160° wide
beam**



Easy to charge up the battery pack



Comes with ball joint for easy system setup



Built-in red color led enhances focusing performance

Color temperature	: 6500K
Burn time	: 1hr (level IV), 2 hrs(level III) 4 hrs(level II) and 10hrs (level I)
Maximum depth	: 100 m tested
Size :	Dia. 108 x L. 152.4mm
Weight in air	: 2300g (including batteries)
Buoyancy in seawater	: -940g (including batteries)
Switching system	: Push button
Front glass	: Tempered optical glass
Bottom	: Safety valve design

AL 220

Multi-function Aluminium LED Light

Multi-function LED light is suitable for diving and outdoor activities – hiking, running, camping, fishing and etc.



220
lumens



Available in 5 colors



Operate with 2xAA batteries



Light is suitable for multi-function



Our light can fit in glove or pouch. Buy separately.

SPECIFICATIONS

Light source	: 1x XPG LED
Light output	: 220 Lm
Casing material	: Aluminum alloy. Anti-corrosive anodized
Power source	: 2xAA alkaline or Ni-MH batteries
Angle of light beam	: 8° narrow beam
Color temperature	: 6500K
Burn time	: Up to 2 hrs
Maximum depth	: 100 m tested
Size :	Dia. 28 x L. 147.8mm
Weight in air	: 135g (including batteries)
Buoyancy in seawater	: - 85g (including batteries)
Front glass	: Tempered optical glass

AL 350AFO

Upgraded

Now you can enjoy the Automatic Flash Off function in a super compact body. It is your handy focusing light for taking quality underwater photos and a rugged pocket light for backup.

350
lumens



Automatic Flash Off
Function AFO interval :
1 sec. +/- 0.3 sec.



3xAAA stand-alone
battery holder



Removable red filter
enhances focusing
performances

SPECIFICATIONS

- Automatic Flash Off function
- Angle of light beam: 55°
- AFO interval : 1 sec. +/- 0.3 sec.
- 350 Lumens Cree LED
- Aluminum Alloy, anti-corrosive anodized
- 3xAAA alkaline or Ni-MH batteries
- Up to 4hrs of burn time
- 100 meters tested
- Lanyard and Clip included
- 261g (including batteries) weight in air
- -118g (including batteries) buoyancy in seawater

AL 350W

Upgraded

Rugged, reliable construction with a powerful output, all add up to a versatile light for any diving occasion. It's also 100 meters tested.



350
lumens



3xAAA stand-alone
battery holder

SPECIFICATIONS

- 350 Lumens Cree LED
- Aluminum Alloy, anti-corrosive anodized
- 3xAAA alkaline or Ni-MH batteries
- Angle of light beam: 40°
- Up to 4hrs of burn time
- Lanyard included
- 164g (including batteries) weight in air
- -80g (including batteries) buoyancy in seawater



AL 350W LED with Glove



AL 350W LED with Pouch



AL 350W LED with Pouch
and Glove

AL 350N SPOTTER

Upgraded

A powerful output in an 8° light beam, it cuts the murky water like a razor, using only 3 x AAA batteries. Full aluminum body for the rugged needs, you can twist it on/off easily.



350
lumens



3xAAA stand-alone
battery holder

SPECIFICATIONS

- 350 Lumens Cree LED
- Aluminum Alloy, anti-corrosive anodized
- 3xAAA alkaline or Ni-MH batteries
- Up to 4hrs of burn time
- Lanyard included
- 100 meter tested
- 204g (including batteries) weight in air
- -91g (including batteries) buoyancy in seawater



AL 350N LED with Glove



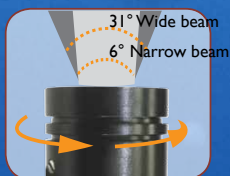
AL 350N LED with Pouch



AL 350N LED with Pouch
and Glove

CF 250M

Using only 3 x AAA batteries, it pumps out an amazing ultra high intensity at the narrowest beam, focus is changeable from 31° wide beam to 6° hot spot even in the water (turning force increases with depth), the shining distance is on par with many powerful primary LED lights.



Twist the front to change the focus (Turning force increases with depth)



Magnetic Swivel Switch allows for one hand operation

250
lumens

5X
Focusable



3xAAA stand-alone
battery holder

SPECIFICATIONS

- 250 Lumens Cree LED
- Aluminum Alloy, anti-corrosive anodized
- 3xAAA alkaline or Ni-MH batteries
- Up to 4hrs of burn time
- Lanyard included
- 100 meter tested
- 193g (including batteries) weight in air
- -91g (including batteries) buoyancy in seawater



CF 250M LED with Glove



CF 250M LED with Pouch



CF 250M LED with Pouch
and Glove

XL QUATTRO

Xtreme LED

A combination of power and ruggedness, our XL Quattro Xtreme LED dive light delivers an 8° concentrated hot spot with exceptional light intensity inside a hard-anodized shell which is super-resistant to scratches and impact for increased durability.



55° periphery 8° hot spot



Magnetic sliding switch

- 1000 Lumens 4 LED at 6500K
- Aluminum Alloy, hard anodized
- 8 X AA alkaline or Ni-MH batteries
- 2 hrs at Hi-output, 5 hrs at Lo-output
- 100 meters tested



**1000
lumens**



Fluorodive Kits

Science has discovered corals contain Fluorescent Proteins invisible to the naked eye that jump into view using innovative high-intensity fluorolights and filters.

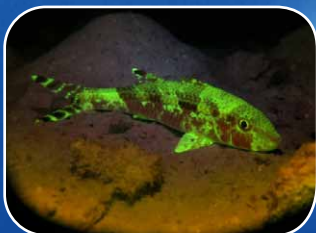
Bigblue Fluorodive Kits provide everything you need to experience this incredibly beautiful effect. You get specially designed filters to precisely match the coral fluorescence wavelength, and yellow blue-barrier filters to increase the intensity of the colors emitted by the corals. Our innovative design is the only one that allows you to easily switch between blue and white light to accommodate changes in dive conditions.

These kits are suitable for night divers, resorts, science institutions, ecological monitoring groups and specialty photographers.

Truly there is nothing that can match the beauty of witnessing coral fluorescence on your next night dive!



Photos of the fluorescence stimulated by the specific wavelength and captured through a barrier filter



VL2500P / VTL2500P / VL1800M Fluorodive Kit



CF250M / CF900P / AL900WP / AL900XWP Fluorodive Kit



Camera Filters



Camera filters are available for you to capture the macro or wide angle photos or videos of the memorable aquatic creatures.

VL 1800M

VL 1800M is the new member of our video light family. It is also a self-contained, compact and powerful all-purpose diving light best suited for video like the VLI 300. It generates 1800 Lumens from three ultra high efficiency LED chips, and offers 25%, 50% and 100% output levels through the reliable magnetic switch. The burn time lasts from 1.8 hours to 8 hours.



Sturdy glove for hands-free operation underwater



Removable red and yellow filter, enhances focusing performance and warmer color tone



Self-contained design with rechargeable Ni-MH battery



3 ultra high intensity LED chip with 6500K light output



Comes with ball joint for easy system setup



3 levels of brightness, controlled by a reliable magnetic switch

**Best
For Video**
120°
**Angle of light
beam**

TECHNICAL SPECIFICATIONS

Light source	: 3 x Ultra high intensity LED
Light output	: I mode = 450 Lm., II mode = 900 Lm., III mode = 1800 Lm.
Casing material	: Aluminum alloy, anti-corrosive anodized.
Power source	: Rechargeable battery pack (P/N BAT-12.0-2.5/10AA)
Angle of light beam	: 120° in air
Color temperature	: 6500K
Burn time	: I mode (Lo=25%) => 8 hrs., II mode (Med=50%) => 3.6 hrs., III mode (Hi=100%) => 1.8 hrs.
Recharging time	: 210 min. at 0.9A, 100 min. at 1.8A (charger model:CHR-16-001)
Maximum depth	: 100 m tested
Size	: Dia. 58.5mm x L. 178mm
Weight in air	: 656g (including battery)
Buoyancy in seawater	: -290g (including battery)
Switching system	: Magnetic switch, O, I, II, III (4 pos.)
Front glass	: Optical convex lens



1800
lumens

TL 1800

This self-contained tech-light pumps out 1800 lumens in a compact body, with the reliable magnetic switch, it allows you to choose from 25%, 50% to 100% brightness output.



3 ultrahigh intensity LED chips for 1800 Lumens



Sturdy Goodman Glove for handy Tech-dive operation



Ni-MH Rechargeable Battery



Double o-ring for reliable waterproof performance

SPECIFICATIONS

Light source	: 3 x ultrahigh intensity LED
Light output	: 450Lm(Lo), 900Lm(Med), 1800Lm(Hi)
Casing material	: Aluminum alloy. Anti-corrosive anodized.
Power source	: Ni-MH Rechargeable battery pack, P/N BAT12.0-2.5/10AA
Angle of light beam	: 10° hot spot, 72° periphery
Color temperature	: 6500K
Burn time	: 1.8hrs(Hi), 3.3hrs(Med), 8hrs(Lo)
Maximum depth	: 100m tested
Size	: Dia. 73 x L. 198.8mm
Weight in air	: 840g. (including batteries)
Buoyancy in seawater	: -350g. (including batteries)
Switching system	: Magnetic switch, 0, I, II, III(4 pos.)
Front glass	: Tempered optical glass

1800
lumens



FF 1X5AFO Plus

With 450 Lumens high output and wide even beam, in addition to the Auto Flash Off function, this compact diving light is an ideal focus light which helps you to focus your perfect shot easily at low light condition(FF 1X5PLUS, non AFO version is available also and can be used for low light video applications).



Single chip high intensity 450 Lumens LED with Auto-Flash Off Function



Ergonomic aluminum handle comes in a package



Uses 4 x AA batteries



Double o-ring and reliable magnetic rotary switch

SPECIFICATIONS

Light source	: Cree LED
Light output	: 450 Lm.
Casing material	: Aluminum alloy. Anti-corrosive anodized.
Power source	: 4 x AA Alkaline 1.5V or Ni-MH 1.2V
Angle of light beam	: 53° wide even beam
Color temperature	: 6500K
Burn time	: Up to 4 hrs
AFO interval	: 1 sec. +/- 0.3 sec.
Maximum depth	: 100m tested
Size	: Dia. 55.2 x L. 205.2mm
Weight in air	: 508g. (including batteries)
Buoyancy in seawater	: -175g. (including batteries)
Switching system	: Magnetic rotary switch
Front glass	: Tempered optical glass

450
lumens



FF 4X5AFO

This FF4x5AFO gives a stunning 750 Lumens and comes with the Automatic Flash Off function, which will make it your ideal focus light as well as primary diving light. (FF 4x5, non AFO version is available also and can be used for low light video applications).

750
lumens



Automatic Flash
Off function with
750 Lumens



Ball joint for easy
photo or video
system set-up



Ergonomic
lantern grip is
included



Double o-ring
for reliable
waterproof
performance

SPECIFICATIONS

Light source	: Cree LED
Light output	: 750 Lm (Hi). 525 Lm (Lo).
Casing material	: Aluminum alloy. Anti-corrosive anodized.
Power source	: 8xAA batteries. Alkaline 1.5V or Ni-MH 1.2V.
Angle of light beam	: 44°
Color temperature	: 6500K
Burn time	: 3 hrs (Hi Mode), 5 hrs (Lo Mode)
AFO interval	: 1 sec. +/- 0.3sec.
Maximum depth	: 100m tested
Size	: Dia. 68 x L. 217mm
Weight in air	: 782g. (including batteries)
Buoyancy in seawater	: -269g. (including batteries)
Switching system	: Magnetic rotary w/locking mechanism.
Front glass	: Tempered optical glass

BB Series

Available in 4 colors, the BB series features a rotary magnetic Hi-Lo switch and includes both a lantern grip and a pistol grip. They are all 100 meters tested.

BB 4x5

- 8 x AA or C batteries. Alkaline 1.5V or Ni-MH 1.2V
- 40° even beam
- Burn time of 3 hrs at Hi-output, 5 hrs at Lo-output

750
lumens



Single chip high output 750 Lumens LED at 6500K



Magnetic switch for Hi-Lo output operation



With adapters for AA batteries and C batteries



Double o-ring: inside cap and on main body

BB 10 10W HID

- 500 lumens 10W HID bulb
- Super stabilized circuitry
- Low battery LED indicator
- Includes C-battery adapter and AA-battery adapter



500
lumens

Technical Light Series

Our LED Technical Light, TL series: not only does it deliver super-high light output but also featuring a 3-level output magnetic switch that enables the user to adjust the brightness and prolong the burn time according to each individual need.



Three levels of brightness controlled by a magnetic switch on the light head



Slider magnetic switch for Hi-Lo output on canister

TL 3P LED

- 9° hot spot, 44° periphery light beam forms a strong penetrating light spot
- 1000 lumens LED white light output at 6500K
- Ni-MH battery canister smart quick-charge in an hour
- 3-level output magnetic switch, 25%, 50% and 100% levels
- Hi-Lo output on canister, 70% and 100% levels
- Burn time around 2.6 hours to 12 hours
- With BAT13.2-4.5 battery canister, it almost doubles up the burn time
- 100 meters tested
- Full aluminum Goodman handle (Optional for TL 3P LED)

**1000
lumens**





Replaceable Ni-MH
battery pack



Large capacity Ni-MH battery
canister- BAT I 3.2-4.5

TL 6P LED

- 8 °hot spot, 70 °periphery light beam forms a strong penetrating light spot
- 1650 lumens LED white light output at 6500K
- Ni-MH battery canister smart quick-charge in an hour
- 3-level output magnetic switch, 25%, 50% and 100% levels
- Hi-Lo output on canister, 70% and 100% levels
- Burn time around 1.8 hours to 8 hours
- With BAT I 3.2-4.5 battery canister, it almost doubles up the burn time
- 100 meters tested
- Full aluminum Goodman handle

**1650
lumens**



Photo/Video Arms and Accessories

Our wide selections of accessories adapt easily to different camera or video systems, and are designed to be durable and easy to use.

Clips

- Made of T6061 grade aluminum
- Available in 2 versions: double clip and a triple clip
- Ergonomic handle makes it easy to twist on and off

CLP 02 Double clip



CLP 03 Triple clip



Photo/Video Arms and Accessories

Arms

- Full T6061 grade aluminum
- Triangular structural design makes it strong and lightweight
- Available in 4 lengths: 5", 8", 12", 16"



Accessories



DA001 - Hot Shoe Adapter



DA002 - Sea and Sea Adapter



DA003 - Light & Motion Adapter



DA004 - Standard Dovetail Plate



DA005 - 8mm Thread



DA006-Sea & Sea Light Adapter



DA007 - Sea & Sea Hot Shoe Adapter



DA008-Sea & Sea Medium



DA009 - Sea & Sea Standard



DA010 - Base Plate Ball Mount



DA011-T-Groove Adapter



DA012 - Universal Mount Base



DA013 - 1/4" Thread Adapter



DA014 - Ikelite 200 Strobe Adapter



DA015 - Single Ball Arm with Sea & Sea Adapter



DA016 - UK Light Adapter



DA017 - Standard Dovetail



DA018 - Inon Z Series Strobe Adapter



DA020 - Video Adapter Plate



DA022 - Slot Stay



DA023 - 6mm Thread Adapter

DEMA SHOW 2013

November 6-9, 2013

Orange County Convention Center

Orlando, Florida

USA

Contact Us

Headquarters : Bossk International Company Limited

Contact Person : Oscar Tong

E-mail : otomfamily@gmail.com

Phone : 852 – 3568-0773

Fax : 852 – 3998-3127

Mail : Room 818, 8/F, Po Yip Building, 23 Hing
Yip Street, Kwun Tong, Hong Kong

Web site : www.bigblue.com.hk
www.bossk.com.hk

US Sales Office : BosskUSA/Bigblue Dive lights

Contact Person : Tim Ratcliffe

E-mail : sales@bigbluedivelights.com

Phone : 727-442-2300

Fax : 404-745-8162

Mail : 1714 County Road 1, Suite 3
Dunedin, FL 34698
USA

Europe Distributor : Dive Technics

Contact Person : Pierre Pauwels
Roman Pauwels

E-mail : pierre@divetechnics.be
roman@divetechnics.be

Phone : 32-0-347-504-21

Fax : 32-0-347-504-33

Mail : Pater Domstraat 45A,
Broechem 2520, Belgium

Asia Pacific Distributor : D'mat Resources Pte Ltd

Contact Person : Song Shing Hae

E-mail : songsh@dmatrix.com.sg

Phone : 65-6795-6228

Fax : 65-6773-1968

Mail : 192 Pandan Loop
#05-17 Pantech Business Hub
Singapore 128381