

# highblue®

THE BRIGHTER IDEA



# 2015

Leading with Innovation

# VL 5800P

Li ion Rechargeable Battery High Power  
LED Video Light



## Features



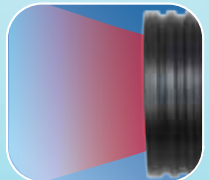
4 Levels of brightness for Flood beam mode, 1 level of brightness of Red color mode and SOS controlled by a reliable push button design



Battery level indicator built-in: Blue color / Green color / Red color / Flash Red color



BATCELL18650x4  
Li ion Rechargeable  
Battery



Built-in red color led enhances focusing performance

## SPECIFICATIONS

Light source	: 10 x XML LED + 6 x XPE Red LED
Light output	: 580 Lm (level I), 1450 Lm (level II) 2900 Lm (level III), 5800 Lm (level IV)
Light output ( Red color mode )	: 500 Lm
Casing material	: Aluminum alloy. Anti-corrosive anodized
Power source	: Li ion Rechargeable battery pack 18650 x 4
Angle of light beam	: 120° wide beam
Color temperature	: 6500K
Burn time	: 3 hrs (level IV), 6 hrs(level III) 12 hrs(level II) and 30 hrs (level I)
Maximum depth	: 100 m tested
Size :	Dia. 55.4 x L. 130.6mm
Weight in air	: 434 g (including battery)
Buoyancy in seawater :	-150 g (including battery)
Switching system	: Push button with battery indicator
Front glass	: Tempered optical glass
Lanyard	: Included



Removable yellow filter enhances warmer color tone



Sturdy glove for hands-free operation underwater



Comes with ball joint for easy system setup

# VTL5000P

Li ion Rechargeable Battery High Power  
LED Video / Tech Light



## Features



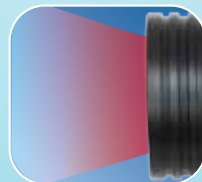
4 Levels of brightness for Flood beam mode, 1 level of brightness for Spot beam mode and 1 level of brightness for Red color mode controlled by a reliable push button design



Battery level indicator built-in: Blue color / Green color / Red color / Flash Red color



BATCELL18650x4  
Li ion Rechargeable  
Battery



Built-in red color led  
enhances focusing  
performance

## SPECIFICATIONS

Light source	: 11 x XML LED + 6 x XPE Red LED
Light output ( Flood beam mode )	: 500 Lm (level I), 1250 Lm (level II) 2500 Lm (level III), 5000 Lm (level IV)
Light output ( Spot beam mode )	: 1000 Lm
Light output ( Red color mode )	: 500 Lm
Casing material	: Aluminum alloy. Anti-corrosive anodized
Power source	: Li ion Rechargeable battery pack 18650 x 4
Angle of light beam	: 120° wide beam and 10° narrow beam
Color temperature	: 6500K
Burn time	: 3 hrs (level IV), 6 hrs(level III) 12 hrs(level II) and 30 hrs (level I)
Maximum depth	: 100 m tested
Size :	Dia. 55.4 x L. 152.3mm
Weight in air	: 498 g (including battery)
Buoyancy in seawater :	-161 g (including battery)
Switching system	: Push button with battery indicator
Front glass	: Tempered optical glass
Lanyard	: Included



Removable yellow filter enhances warmer color tone



Sturdy glove for hands-free operation underwater



Comes with ball joint for easy system setup



Angle of light beam



# TL4000P

Li ion Rechargeable Battery High Power  
LED Tech Light



## Features



4 Levels of brightness  
and SOS controlled by a  
reliable push button  
design



Battery level indicator  
built-in: Blue color /  
Green color / Red color  
/ Flash Red color




BATCELL18650x4  
Li ion Rechargeable  
Battery



Sturdy Goodman  
Glove for handy  
Tech-dive operation

## SPECIFICATIONS



Light source	: 4 x XML LED
Light output	: 400 Lm (level I), 1000 Lm (level II) 2000 Lm (level III), 4000 Lm (level IV)
Casing material	: Aluminum alloy. Anti-corrosive anodized
Power source	: Li ion Rechargeable battery pack 18650 x 4
Angle of light beam	: 10° narrow beam
Color temperature	: 6500K
Burn time	: 2 hrs (level IV), 4 hrs(level III) 8 hrs(level II) and 20 hrs (level I)
Maximum depth	: 100 m tested
Size :	Dia. 72 x L. 150.3mm
Weight in air	: 596 g (including battery)
Buoyancy in seawater :	-222 g (including battery)
Switching system	: Push button with battery indicator
Front glass	: Tempered optical glass
Lanyard	: Included



Ergonomic aluminum handle comes in a package



Goodman handle with connector.  
Sold separately

# TL 15000P

Li ion Rechargeable Battery  
Super Power LED Tech Light



## Features



4 Levels of brightness  
and SOS controlled by a  
reliable push button  
design



Battery level indicator  
built-in: Blue color /  
Green color / Red color  
/ Flash Red color



Easy to charge up the  
battery pack



Ergonomic aluminum  
handle comes in a  
package



## SPECIFICATIONS

Light source	: 14 x XML LED
Light output	: 1500 Lm (level I), 3750 Lm (level II) 7500 Lm (level III), 15000 Lm (level IV)
Casing material	: Aluminum alloy. Anti-corrosive anodized
Power source	: Li ion Rechargeable battery pack
Angle of light beam	: 10° narrow beam
Color temperature	: 6500K
Burn time	: 3 hrs (level IV), 6 hrs (level III) 12 hrs (level II) and 30 hrs (level I)
Maximum depth	: 100 m tested
Size :	Dia. 124 x L. 174.5mm
Weight in air	: 2465 g (including battery)
Buoyancy in seawater :	-880 g (including battery)
Switching system	: Push button with battery indicator
Front glass	: Tempered optical glass

**TL 15000PC**  
**Optional Canister Version**



# VL 15000PM

Li ion Rechargeable Battery  
Super Power LED Video Light



## Features



4 levels of brightness for Flood beam mode, 1 level of brightness of Red color mode and SOS controlled by a reliable push button design



Battery level indicator built-in: Blue color / Green color / Red color / Flash Red color



BATCELL32650x4  
Li ion Rechargeable  
Battery



Built-in red color led enhances focusing performance



**15000  
LUMENS**

Angle of light beam

**160°** wide beam

## SPECIFICATIONS

Light source	: 25 x XML LED + 6 x XPE Red LED
Light output	: 1500 Lm (level I), 3750 Lm (level II) 7500 Lm (level III), 15000 Lm (level IV)
Light output ( Red color mode )	: 700 Lm
Casing material	: Aluminum alloy. Anti-corrosive anodized
Power source	: Li ion Rechargeable battery pack
Angle of light beam	: 160° wide beam
Color temperature	: 6500K
Burn time	: 3 hrs (level IV), 6 hrs(level III) 12 hrs(level II) and 30 hrs (level I)
Maximum depth	: 100 m tested
Size :	Dia. 92 x L. 129.2mm
Weight in air	: 1369 g (including battery)
Buoyancy in seawater :	-518 g (including battery)
Switching system	: Push button with battery indicator
Front glass	: Tempered optical glass



25pcs XML LED to  
provide 15000 lumens



Comes with ball joint  
for easy system setup



Ergonomic aluminum  
handle comes in a  
package

# VL 25000P

Li ion Rechargeable Battery  
Ultra Power LED Video Light



## Features



4 levels of brightness for Flood beam mode, 1 level of brightness of Red color mode and SOS controlled by a reliable push button design



Battery level indicator built-in: Blue color / Green color / Red color / Flash Red color



Easy to charge up the battery pack



Built-in red color led enhances focusing performance

**The Most  
Brightness  
25000  
LUMENS**

**Angle of light beam**

**160°**

## SPECIFICATIONS

Light source	: 35 x XML LED + 10 x XPE Red LED
Light output	: 2500 Lm (level I), 6250 Lm (level II) 12500 Lm (level III), 25000 Lm (level IV)
Light output ( Red color mode )	: 1000 Lm
Casing material	: Aluminum alloy. Anti-corrosive anodized
Power source	: Li ion Rechargeable battery pack
Angle of light beam	: 160° wide beam
Color temperature	: 6500K
Burn time	: 2.5 hrs (level IV), 5 hrs(level III) 10 hrs(level II) and 25 hrs (level I)
Maximum depth	: 100 m tested
Size :	Dia. 108 x L. 152.4mm
Weight in air	: 2300 g (including battery)
Buoyancy in seawater :	-940 g (including battery)
Switching system	: Push button with battery indicator
Front glass	: Tempered optical glass



35pcs XML LED to  
provide 25000 lumens



Comes with ball joint  
for easy system setup



Ergonomic aluminum  
handle comes in a  
package



# CF 450

NEW

450  
lumens

5X  
Focusable



Twist the front to change the focus  
(Turning force increases with depth)



Magnetic Swivel Switch allows  
for one hand operation



3xAAA stand-alone  
battery holder



CF 450 LED with Glove



CF 450 LED with Pouch



CF 450 LED with Pouch and Glove

## SPECIFICATIONS

- 450 Lumens Cree LED
- Aluminum Alloy, anti-corrosive anodized
- 3xAAA alkaline or Ni-MH batteries
- Up to 4hrs of burn time
- Lanyard included
- 100 meter tested
- 235g ( including batteries) weight in air
- -113g ( including batteries) buoyancy in seawater

# EASY CLIP LIGHT



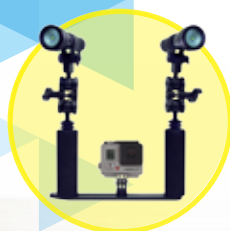
Easily clip the light on the  
goggle, mask, belt and etc.

## SPECIFICATIONS

- Available three color output – Blue, Red, Green
- Up to 72 hrs of burn time
- 1x CR2032 battery
- Dia. 30 x L. 27mm
- 100 meter tested
- Lanyard included
- 15g ( including battery) weight in air
- 0g ( including battery) buoyancy in seawater

# BLACK MOLLY

## AL 1800XP



## SPECIFICATIONS

Light source	: 2 x XML LED + 2 x XPE Red LED
Light output ( Flood beam mode )	: 180 Lm (level I), 450 Lm (level II) 900 Lm (level III), 1800 Lm (level IV)
Light output ( Red beam mode )	: 150 Lm
Casing material	: Aluminum alloy. Anti-corrosive anodized
Power source	: Li ion Rechargeable battery pack 26650
Angle of light beam	: 120° wide beam
Color temperature	: 6500K
Burn time	: 2 hrs (level IV), 4 hrs (level III) 8 hrs (level II) and 20 hrs (level I)
Maximum depth	: 100 m tested
Size :	Dia. 38.8 x L. 127.5 mm
Weight in air	: 215 g (including battery)
Buoyancy in seawater	: -104 g (including battery)
Switching system	: Push button with battery indicator
Front glass	: Tempered optical glass
Lanyard	: Included



Built-in red color led enhances focusing performance



4 levels of brightness for Flood beam mode, 1 level of brightness of Red color mode and SOS controlled by a reliable push button design



Battery level indicator built-in: Blue color / Green color / Red color / Flash Red color



Removable yellow filter enhances warmer color tone



BATCELL26650 Li ion Rechargeable Battery



Comes with ball joint for easy system setup

# AL1000NP

Li ion Rechargeable Battery Narrow Beam LED Light



## SPECIFICATIONS

Light source	: XML LED
Light output	: 100 Lm (level I), 250 Lm (level II) 500 Lm (level III), 1000 Lm (level IV)
Casing material	: Aluminum alloy. Anti-corrosive anodized
Power source	: Li ion Rechargeable battery pack 18650
Angle of light beam	: 10° narrow beam
Color temperature	: 6500K
Burn time	: 2hrs (level IV), 5 hrs(level III) 10 hrs(level II) and 20hrs (level I)
Maximum depth	: 100 m tested
Size :	Dia. 35 x L. 145.1 mm
Weight in air	: 178 g (including battery)
Buoyancy in seawater :	-79 g (including battery)
Switching system	: Push button with battery indicator
Front glass	: Tempered optical glass
Lanyard	: Included



4 Levels of brightness and SOS controlled by a reliable push button design



Battery level indicator built-in: Blue color / Green color / Red color / Flash Red color



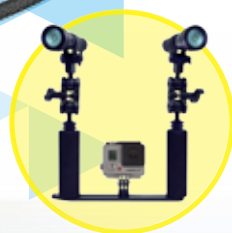
BATCELL 18650 Li ion Rechargeable Battery



Our light can fit in glove or pouch. Sold separately.

# AL 1000WP

## Li ion Rechargeable Battery Wide Beam LED Light



### SPECIFICATIONS

Light source	: XML LED
Light output	: 100 Lm (level I), 250 Lm (level II) 500 Lm (level III), 1000 Lm (level IV)
Casing material	: Aluminum alloy. Anti-corrosive anodized
Power source	: Li ion Rechargeable battery pack 18650
Angle of light beam	: 85° wide beam
Color temperature	: 6500K
Burn time	: 2hrs (level IV), 5 hrs(level III) 10 hrs(level II) and 20hrs (level I)
Maximum depth	: 100 m tested
Size :	Dia. 38.8 x L. 134 mm
Weight in air	: 182 g (including battery)
Buoyancy in seawater	: -92 g (including battery)
Switching system	: Push button with battery indicator
Front glass	: Concave lens
Lanyard	: Included



4 Levels of brightness  
and SOS controlled by  
a reliable push button  
design



Battery level indicator  
built-in: Blue color /  
Green color / Red color  
/ Flash Red color



BATCELL 18650 Li ion  
Rechargeable Battery



Comes with the clip for  
easy system setup



Removable red and  
yellow filter enhances  
focusing performances  
and warm color tone

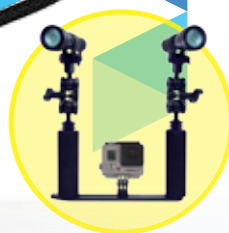


Our light can fit in  
glove or pouch. Sold  
separately.



# AL 1000XWP

## Li ion Rechargeable Battery Extra Wide Beam LED Light

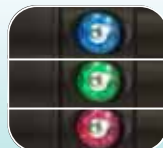


### SPECIFICATIONS

Light source	: XML LED
Light output	: 100 Lm (level I), 250 Lm (level II) 500 Lm (level III), 1000 Lm (level IV)
Casing material	: Aluminum alloy. Anti-corrosive anodized
Power source	: Li ion Rechargeable battery pack 18650
Angle of light beam	: 120° wide beam
Color temperature	: 6500K
Burn time	: 2hrs (level IV), 5 hrs(level III) 10 hrs(level II) and 20hrs (level I)
Maximum depth	: 100 m tested
Size :	Dia. 38.8 x L. 127.5 mm
Weight in air	: 170 g (including battery)
Buoyancy in seawater :	-85 g (including battery)
Switching system	: Push button with battery indicator
Front glass	: Tempered optical glass
Lanyard	: Included



4 Levels of brightness and SOS controlled by a reliable push button design



Battery level indicator built-in: Blue color / Green color / Red color / Flash Red color



BATCELL 18650 Li ion Rechargeable Battery



Comes with the clip for easy system setup



Removable red and yellow filter enhances focusing performances and warm color tone



Our light can fit in glove or pouch. Sold separately.

# CF 1000P

Li ion Rechargeable Battery Changeable Focus LED Light



## SPECIFICATIONS

Light source	: XML LED
Light output	: 100 Lm (level I), 250 Lm (level II) 500 Lm (level III), 1000 Lm (level IV)
Casing material	: Aluminum alloy. Anti-corrosive anodized
Power source	: Li ion Rechargeable battery pack 18650
Angle of light beam	: 7° narrow beam to 37° wide beam
Color temperature	: 6500K
Burn time	: 2hrs (level IV), 5 hrs(level III) 10 hrs(level II) and 20hrs (level I)
Maximum depth	: 100 m tested
Size :	Dia. 39.5 x L. 172.1 mm
Weight in air	: 250 g (including battery)
Buoyancy in seawater	: -117 g (including battery)
Switching system	: Push button with battery indicator
Front glass	: Tempered optical glass
Lanyard	: Included



4 Levels of brightness  
and SOS controlled by  
a reliable push button  
design



Battery level indicator  
built-in: Blue color /  
Green color / Red color  
/ Flash Red color



BATCELL 18650 Li ion  
Rechargeable Battery



Twist the front to  
change the focus  
(Turning force  
increases with depth)

# TL 2800P

Li ion Rechargeable Battery LED Tech Light



## SPECIFICATIONS

Light source	: 3 x XML LED
Light output	: 280 Lm (level I), 700 Lm (level II) 1400 Lm (level III), 2800 Lm (level IV)
Casing material	: Aluminum alloy. Anti-corrosive anodized
Power source	: Li ion Rechargeable battery pack 32650
Angle of light beam	: 10° narrow beam
Color temperature	: 6500K
Burn time	: 1.5 hrs (level IV), 3 hrs(level III) 6 hrs(level II) and 15 hrs (level I)
Maximum depth	: 100 m tested
Size :	Dia. 63x L. 135.6 mm
Weight in air	: 447 g (including battery)
Buoyancy in seawater	: -217 g (including battery)
Switching system	: Push button with battery indicator
Front glass	: Tempered optical glass
Lanyard	: Included



4 Levels of brightness and SOS controlled by a reliable push button design



Battery level indicator built-in: Blue color / Green color / Red color / Flash Red color



BATCELL 32650 Li ion Rechargeable Battery



Ergonomic aluminum handle comes in a package



Sturdy Goodman Glove for handy Tech-diver operation



Goodman handle with connector. Sold separately

## Li ion Rechargeable Battery LED Video / Tech Light



**120°**  
Wide beam

**10°**  
Narrow beam



## SPECIFICATIONS

Light source	: 7 x XML LED + 2 x XPE Red LED
Light output ( Flood beam mode )	: 280Lm (level I), 700 Lm (level II) 1400 Lm (level III), 2800 Lm (level IV)
Light output ( Spot beam mode )	: 1000 Lm
Light output ( Red beam mode )	: 100 Lm
Casing material	: Aluminum alloy. Anti-corrosive anodized
Power source	: Li ion Rechargeable battery pack 32650
Angle of light beam	: 120° wide beam and 10° narrow beam
Color temperature	: 6500K
Burn time	: 1.5 hrs (level IV), 3 hrs(level III) 6 hrs(level II) and 15 hrs (level I)
Maximum depth	: 100 m tested
Size :	Dia. 55.5 x L. 140.6 mm
Weight in air	: 432 g (including battery)
Buoyancy in seawater :	-205 g (including battery)
Switching system	: Push button with battery indicator
Front glass	: Tempered optical glass
Lanyard	: Included

Sturdy glove for hands-free operation underwater



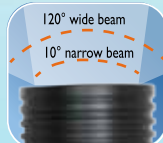
Built-in red color led enhances focusing performance



Removable yellow filter,  
enhances warmer color  
tone



Battery level indicator  
built-in: Blue color /  
Green color / Red  
color / Flash Red  
color



Angle of light beam



**BATCELL 32650 Li ion**  
**Rechargeable Battery**



Comes with ball joint  
for easy system setup



# VL 2800P

Li ion Rechargeable Battery LED Video Light



**Best  
For Video**  
**120°**  
**Angle of light  
beam**

## SPECIFICATIONS

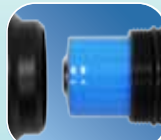
Light source	: 6 x XML LED + 4 x XPE Red LED
Light output ( Flood beam mode )	: 280Lm (level I), 700 Lm (level II) 1400 Lm (level III), 2800 Lm (level IV)
Light output ( Red beam mode )	: 200 Lm
Casing material	: Aluminum alloy. Anti-corrosive anodized
Power source	: Li ion Rechargeable battery pack 32650
Angle of light beam	: 120° wide beam
Color temperature	: 6500K
Burn time	: 1.5 hrs (level IV), 3 hrs(level III) 6 hrs(level II) and 15 hrs (level I)
Maximum depth	: 100 m tested
Size :	Dia. 52.5 x L. 118.1 mm
Weight in air	: 343 g (including battery)
Buoyancy in seawater :	-169 g (including battery)
Switching system	: Push button with battery indicator
Front glass	: Tempered optical glass
Lanyard	: Included



Sturdy glove for  
hands-free operation  
underwater



4 levels of brightness  
for Flood beam mode, 1  
level of brightness of Red  
color mode and SOS  
controlled by a reliable  
push button design



BATCELL 32650 Li ion  
Rechargeable Battery



Built-in red color led  
enhances focusing  
performance



Comes with ball joint  
for easy system setup



Removable yellow filter;  
enhances warmer color  
tone



Battery level indicator  
built-in: Blue color /  
Green color / Red  
color / Flash Red color





# LIGHT HEAD



**VTL 5000PLH**



**TL 4000PLH**



**VTL 2800PLH**



**TL 2800PLH**



**AL 1000NPLH**



**AL 1000WPLH**

**Available Now**



Light heads can fit for VTL 5000P, TL 4000P & VL 5800P.

**VL 5800PLH**



Light heads can fit for VTL 2800P, TL 2800P & VL 2800P.

**VL 2800PLH**



Light heads can fit for AL 1000NP, AL 1000WP & AL 1000XWP.

**AL 1000XWPLH**

# AL 450W

**450**  
lumens

**Upgraded**



3xAAA stand-alone  
battery holder



AL 450W LED with Glove



AL 450W LED with Pouch



AL 450W LED with Pouch  
and Glove

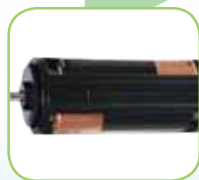
## SPECIFICATIONS

- 450 Lumens Cree LED
- Aluminum Alloy, anti-corrosive anodized
- 3xAAA alkaline or Ni-MH batteries
- Angle of light beam: 40°
- Up to 4hrs of burn time
- Lanyard included
- 164g ( including batteries) weight in air
- -80g ( including batteries) buoyancy in seawater

# AL 450N SPOTTER

**450**  
lumens

**Upgraded**



3xAAA stand-alone  
battery holder



AL 450N LED with Glove



AL 450N LED with Pouch



AL 450N LED with Pouch  
and Glove

## SPECIFICATIONS

- 450 Lumens Cree LED
- Aluminum Alloy, anti-corrosive anodized
- 3xAAA alkaline or Ni-MH batteries
- Angle of light beam: 8°
- Up to 4hrs of burn time
- Lanyard included
- 204g ( including batteries) weight in air
- -91g ( including batteries) buoyancy in seawater

# AL 450AFO

450  
lumens

Upgraded



## SPECIFICATIONS

- Automatic Flash Off function
- Angle of light beam: 55°
- AFO interval : 1 sec. +/- 0.3 sec.
- 450 Lumens Cree LED
- Aluminum Alloy, anti-corrosive anodized
- 3xAAA alkaline or Ni-MH batteries
- Up to 4hrs of burn time
- 100 meters tested
- Lanyard and Clip included
- 261g ( including batteries) weight in air
- -118g ( including batteries) buoyancy in seawater

Automatic Flash Off  
Function AFO interval :  
1 sec. +/- 0.3 sec.



3xAAA stand-alone  
battery holder



Removable red filter  
enhances focusing  
performances



# AL 220

## Multi-function Aluminium LED Light

220  
lumens



Light is suitable for multi-function



Available in 5 colors

## SPECIFICATIONS

Light source	: 1x XPG LED
Light output	: 220 Lm
Casing material	: Aluminum alloy. Anti-corrosive anodized
Power source	: 2xAA alkaline or Ni-MH batteries
Angle of light beam	: 8° narrow beam
Color temperature	: 6500K
Burn time	: Up to 2 hrs
Maximum depth	: 100 m tested
Size :	Dia. 28 x L. 147.8mm
Weight in air	: 135g ( including batteries)
Buoyancy in seawater :	- 85g ( including batteries)
Front glass	: Tempered optical glass



Operate with 2xAA batteries



Our light can fit in glove or pouch. Sold separately

# COMBO PACK

## AL 220

Multi-function Aluminium LED Light

## AL 1000NP

Li ion Rechargeable Battery  
Narrow Beam LED Light

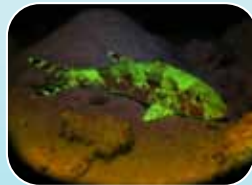


# FLUORODIVE KIT SETS

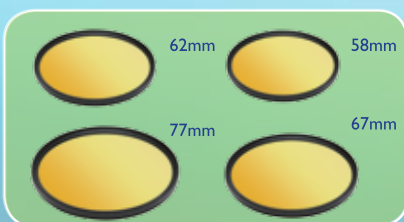
Science has discovered corals contain Fluorescent Proteins invisible to the naked eye that jump into view using innovative high-intensity fluorolights and filters.

Bigblue Fluorodive Kits provide everything you need to experience this incredibly beautiful effect. You get specially designed filters to precisely match the coral fluorescence wavelength, and yellow blue-barrier filters to increase the intensity of the colors emitted by the corals. Our innovative design is the only one that allows you to easily switch between blue and white light to accommodate changes in dive conditions. These kits are suitable for night divers, resorts, science institutions, ecological monitoring groups and specialty photographers.

Truly there is nothing that can match the beauty of witnessing coral fluorescence on your next night dive!



Photos of the fluorescence stimulated by the specific wavelength and captured through a barrier filter



## Camera Filters

Camera filters are available for you to capture the macro or wide angle photos or videos of the memorable aquatic creatures.

## **CF 450/ CF 1000P/ AL 1000WP/ AL 1000XWP/ Black Molly Fluorodive Kit**



## **VL 2800P / VTL 2800P / VTL 5000P / VL 5800P Fluorodive Kit**



# XL QUATTRO

1000  
lumens



55° periphery 8° hot spot

## SPECIFICATIONS

- 1000 Lumens 4 LED at 6500K
- Aluminum Alloy, hard anodized
- 8 X AA alkaline or Ni-MH batteries
- 2 hrs at Hi-output, 5 hrs at Lo-output
- 100 meters tested



Magnetic sliding switch





# FF 1X5PAFO

450  
lumens



Ergonomic aluminum handle comes in a package



Single chip high intensity 450 Lumens LED with Auto-Flash Off Function



Uses 4 x AA batteries



Double o-ring and reliable magnetic rotary switch

## SPECIFICATIONS

Light source	: Cree LED
Light output	: 450 Lm.
Casing material	: Aluminum alloy. Anti-corrosive anodized.
Power source	: 4 x AA Alkaline 1.5V or Ni-MH 1.2V
Angle of light beam	: 53° wide even beam
Color temperature	: 6500K
Burn time	: Up to 4 hrs
AFO interval	: 1 sec. +/- 0.3 sec.
Maximum depth	: 100m tested
Size	: Dia. 55.2 x L. 205.2mm
Weight in air	: 508g. (including batteries)
Buoyancy in seawater	: -175g. (including batteries)
Switching system	: Magnetic rotary switch
Front glass	: Tempered optical glass

# TL 6P

## Technical Light Series

1650  
lumens



Three levels of brightness controlled by a magnetic switch on the light head



Slider magnetic switch for Hi-Lo output on canister

## SPECIFICATIONS

- 8 °hot spot, 70 °periphery light beam forms a strong penetrating light spot
- 1650 lumens LED white light output at 6500K
- Ni-MH battery canister smart quick-charge in an hour
- 3-level output magnetic switch, 25%, 50% and 100% levels
- Hi-Lo output on canister, 70% and 100% levels
- Burn time around 1.8 hours to 8 hours
- With BAT13.2-4.5 battery canister, it almost doubles up the burn time
- 100 meters tested
- Full aluminum Goodman handle



Replaceable Ni-MH battery pack



Large capacity Ni-MH battery canister- BAT13.2-4.5

# BBGPTRAY

## GO Pro Tray



### GO Pro Kit sets

#### GP2800 Kit

- 1 pc. of Double Clip (CLP02)
- 1 pc. of Go Pro Tray (BBGPTRAY)
- Light not included



#### GP1000 Kit

- 2 pcs. of Double Clip (CLP02)
- 2 pcs. of Sea & Sea Standard (DA009)
- 1 pc. of Go Pro Tray (BBGPTRAY)
- Lights not included

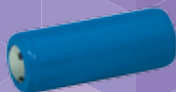


#### GP450 Kit

- 2 pcs. of Mounting Clip (CLIPMINTCF)
- 2 pcs. of Double Clip (CLP02)
- 2 pcs. of Sea & Sea Standard (DA009)
- 1 pc. of Go Pro Tray (BBGPTRAY)
- Lights not included



# ACCESSORIES



## BATCELL18650

Battery for AL 1000NP /  
AL 1000WP / AL 1000XWP /  
CF 1000P



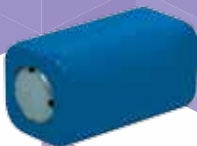
## BATCELL26650

Battery for Black Molly



## BATCELL32650

Battery for VL 2800P / VTL 2800P /  
TL 2800P



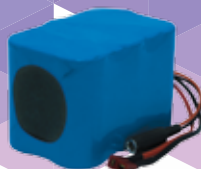
## BATCELL18650x4

Battery for VL 5800P / VTL 5000P  
/ TL 4000P



## BATCELL32650x4

Battery for VL 15000PM



## BATCELL15K

Battery for VL 25000P /  
TL 15000P / TL 15000PC



## BATCHR32650x4

Charger for VL 15000PM



## BATCHR18650x4

Charger for VL 5800P /  
VTL 5000P / TL 4000P



## BATCHR15K

Charger for VL 25000P /  
TL 15000P / TL 15000PC



## BATCHR18650DUAL

Dual channel charger for AL 1000NP /  
AL 1000WP / AL 1000XWP / CF 1000P



## BATCHR18650

Charger for AL 1000NP / AL 1000WP /  
AL 1000XWP / CF 1000P



## BATCHR32650/26650

Charger for VL 2800P / VTL 2800P /  
TL 2800P / Black Molly



## VLGGLOVE

Reinforced goodman glove for  
VL 2800P / VTL 2800P / TL 2800P /  
VL 5800P / VTL 5000P / TL 4000P



## NPGGLOVE

Neoprene glove for AL 1000NP /  
AL 1000WP / AL 1000XWP



## NPGGLOVEM

Neoprene glove for Mini Light



### NPRPOUCH

Neoprene pouch with retractor for AL 1000NP / AL 1000VWP / AL 1000XWP



### NPRPOUCHM

Neoprene pouch with retractor for Mini Light



### NPHOODMS

Neoprene hood for one light holster



### NPHOODMD

Neoprene hood for two light holster



### LNTHANDLE

Lantern style handle



### GHA-01C

Goodman handle with connector for TL 2800P / TL 4000P



### CLIPMNTAL

Mounting clip for AL 1000VWP / AL 1000XWP / CF 1000P



### CLIPMNTCF

Mounting clip for CF 450 / AL 450W / AL 450AFO



### FDMASKYL

Yellow filter for Fluorodiving



### FILYELSM

Yellow filter for AL 1000VWP / AL 1000XWP / Black Molly



### FILREDSM

Red filter for AL 1000VWP / AL 1000XWP



### FILYELLG

Yellow filter for VL 2800P / VTL 2800P / VL 5800P / VTL 5000P



### FILREDMD

Red filter for AL 450AFO



# PHOTO/VIDEO ARMS & ACCESSORIES

## Clips

- Made of T6061 grade aluminum
- Available in 2 versions: double clip and a triple clip
- Ergonomic handle makes it easy to twist on and off



CLP 02 Double clip



CLP 03 Triple clip

## Arms

- Full T6061 grade aluminum
- Triangular structural design makes it strong and lightweight
- Available in 4 lengths: 5", 8", 12", 16"



ARM 05 5" Arm



ARM 08 8" Arm



ARM 12 12" Arm



ARM 16 16" Arm

# DA SERIES



**DA001**

Hot Shoe Adapter



**DA002**

Sea & Sea Adapter



**DA003**

Light & Motion Adapter



**DA004**

Standard Dovetail Plate



**DA005**

8mm Thread



**DA006**

Sea & Sea Light Adapter



**DA007**

Sea & Sea Hot Shoe Adapter



**DA008**

Sea & Sea Medium



**DA009**

Sea & Sea Standard



**DA010**

Base Plate Ball Mount



**DA011**

T-Groove Adapter



**DA012**

Universal Mount Base



**DA013F**

1/4" Thread Adapter



**DA013M**

1/4" Thread Adapter



**DA014**

Ikelite 200 Strobe Adapter



**DA015**

Single Ball Arm with Sea & Sea Adapter



**DA016**

UK Light Adapter



**DA017**

Standard Dovetail



**DA018**

Iron Z Series Strobe Adapter



**DA022**

Slot Stay



**DA023**

6mm Thread Adapter

Specifications subject to change without prior notice.