

Replacing the Battery Pack Inside the Body

- Unscrew the body and then slide out the old battery pack BATCELL18650x7.



Choosing between 3 Levels of cool white, 3 Levels of warm white, Red and SOS of output

- Press the push button every time to choose the desired output level : I-output at 25%, II-output at 50%, III-output at 100%.
- For 6-Levels setting of cool white and warm white, press the push button each time to change the level of output accordingly.
- For Red LED setting, press the push button continuously two times to get red effect and back to normal when you press the push button once again.
- For SOS setting, press the push button for 2 sec to get SOS effect and back to normal when you press the push button once again.
- For OFF setting, press the push button one time after 1 sec of level selection or press the push button five times after 6-Levels setting.



Setup Using Photographic Arms and Clips*

- Twist the knobs on the clips anticlockwise until loosened.
- Insert the ball joint of the Video Light in between the gaps of the clips.
- Once the ball joint is inserted into the clips, secure its position by twisting the knobs on the clips clockwise.



*Photographic Arms and Clips are sold separately

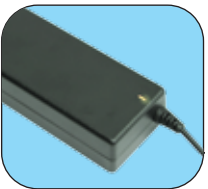
Battery level indicator built-in

- Color of LEDs change from the time being. It will change from blue to green and green to red. When the red led flashes, it reminds people to charge up the battery.



Charging the Battery

- Plug the Smart Quick Charger's connector into the socket of the BATCELL18650x7 Li ion rechargeable battery pack.
- Red light means charging in progress, green light means fully charged.



- There is no need to discharge after use.
- Charge time will depend on the remaining capacity in the battery and the surrounding temperature.

Setup Using Handle

- The light comes with handle



Technical Specifications

Light Source	32 x XML LED + 8 x XPE Red LED
Light Output (Cool white mode)	3750 Lm (level I), 7500 Lm (level II) 15000 Lm (level III)
Light Output (Warm white mode)	1500 Lm (level I), 3000 Lm (level II) 6000 Lm (level III)
Light output (Red color mode)	1000 Lm
Casing Material	Aluminum alloy. Anti-corrosive anodized
Power Source	Li ion Rechargeable battery pack BATCELL18650x7
Angle of Light Beam	160° wide beam
Color Temperature	6500K cool white and 5500K warm white
Burn Time	2 hrs (level III), 4 hrs(level II) 8 hrs(level I)
Maximum Depth	100m tested
Size:	Dia. 70 x L. 131mm
Weight in Air	815g (including battery)
Buoyancy in Sea water	-356g (including battery)
Switching System	Push button with battery indicator
Front Glass	Tempered optical glass

Specifications subject to change without prior notice

Maintenance and Transportation

- After each dive, always rinse with fresh water. If the diving light will not be used for a prolonged period of time (more than a month), remove the battery from the light.
- In rare cases of flooding, discontinue use. Turn the light off immediately and rinse with fresh water. Let the components dry completely, and return it to Bigblue for service.
- Flooding damage cannot be repaired on site.

Clean the light and Lubricate the O-Ring

- For good practice, put the light into fresh water for few hours after every dive.
- Dry it out and put the silicone crease on the O-Ring. Ready for other dive.

VL15000P
PRO MINI TRI COLOR
Li ion Rechargeable Battery
Super Power LED Video Light
with Three Color Output

15000 LUMENS
Angle of light beam
160° wide beam

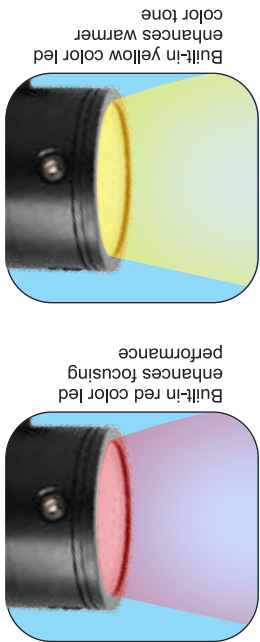


Features

- 24 x super high intensity LED deliver 15000 lumens, and an '160" perfectly even light spot, making it a must for the best video shoot results.
- The LEDs are maintenance-free, they guarantee a burn time of 50,000 hours, reducing the need for frequent bulb replacement.
- The 6500K white light reflects the true vibrant colors of the underwater surrounding while diving.
- The six levels power output lets you choose between 100%, 50% and 25% of total brightness for cool white and warm white. The push button not only makes it easy to change between the power output levels, but it is also designed to be insulated from all internal parts, eliminating the risk of leakage.

Features

- Li ion rechargeable battery design comes with a smart charger, enabling you to charge in a few hours.
- Built in red LED for viewing shy little creatures and enhancing focusing performance.
- Built in yellow LED to achieve a warmer color tone for video shooting
- The thermal protection system prevents the light from overheating by automatically cutting off its power in case of prolonged use on land, or exposure to temperatures above 70°C. As soon as the light cools off, power comes back on.



Using the rechargeable Li-ion battery

- Intended to be used with the custom-made BATCELL18650X7 Li ion rechargeable battery pack only.
- Connect with the correct polarity (+ and -) only, incorrect connection can damage the unit.
- Fully charge the batteries before using for the first time.
- Use only the power adapters supplied with the charger.
- Using incompatible adapters may damage the charger or result in fire or electric shock.
- Charge time will depend on the remaining charge in the battery and the surrounding temperature.
- Do not charge near hot temperature, under direct sunlight, cover the charger with a blanket, or place under heavy pressure. If the temperature is too high, it may cause the battery to leak or rupture.
- When storing or carrying the battery, avoid direct contact with metal objects to avoid short circuit.
- The Li ion battery should not be dropped or be subjected to strong mechanical shock.
- Remove the battery from the light if it is not going to be in use for an extended period of time.
- Do not operate the battery or the charger if it has been damaged or subjected to shock.
- Do not dispose of in fire. Do not heat, deform, solder, disassemble or modify.
- Do not dispose of your rechargeable battery with general household waste. Check with your local collection system for electrical and electronic products.

Limited Warranty

1. Bigblue guarantees the proper operation of this product by the original retail purchaser under normal and intended use.
2. This warranty applies only to the original retail purchaser, which does not apply to commercial or rental use, nor is it transferable to third parties.
3. If the original retail purchaser detects defect in the materials or workmanship, return the product together with proof of purchase indicating the date of purchase to an authorized Bigblue dealer or Bigblue.
4. The warranty covers a period of up to one (1) year from the date of purchase. Warranty for rechargeable battery pack is valid for six (6) months only.
5. This limited warranty is in lieu of all other warranties. No other person or party is authorized to assume for Bigblue any other liability in connection with the sales of this product.
6. This warranty will be voided if the product or any of its parts have been tempered with, repaired, modified, transformed, adapted or damaged without authorization by Bigblue.
7. This warranty does not cover parts subjected to normal wear and tear, including and is not limited to the following: O-rings, battery pack, front glass (surface scratch or damage on impact).
8. This warranty does not cover damages due to impact, use in chlorinated or polluted waters, and extended exposure to heat sources.

Bossk International Company Limited

Tel : (852) 3568 0773
Email : customerservice@bigblue.com.hk
Web : www.bigblue.com.hk
MADE IN CHINA Patent Pending

