

2017

**Taking Innovation to
New Depths**



VL1 5000P Pro Mini

Li ion Rechargeable Battery Super
Power LED Video Light



Features



4 levels of brightness
1 level of brightness of
Red color mode and
SOS controlled by a
reliable push button
design



Battery level indicator
built-in: Blue color /
Green color / Red
color / Flash Red color



BATCELL 18650x7
Li ion Rechargeable
Battery



Built-in red color led
enhances focusing
performance



15000 LUMENS

Angle of light beam

160° wide beam

SPECIFICATIONS

Light source	: 24 x XML LED + 8 x XPE Red LED
Light output	: 1500 Lm (level I), 3750 Lm (level II) 7500 Lm (level III), 15000 Lm (level IV)
Light output (Red color mode)	: 1000 Lm
Casing material	: Aluminum alloy. Anti-corrosive anodized
Power source	: Li ion Rechargeable battery pack BATCELL I8650x7
Angle of light beam	: 160° wide beam
Color temperature	: 6500K
Burn time	: 2 hrs (level IV), 4 hrs(level III) 8 hrs(level II) and 20 hrs (level I)
Maximum depth	: 100 m tested
Size	: Dia. 70 x L. 131mm
Weight in air	: 800 g (including battery)
Buoyancy in seawater	: -341 g (including battery)
Switching system	: Push button with battery indicator
Front glass	: Tempered optical glass



24pcs XML LED
to provide
15000 lumens



Comes with
ball joint for
easy system
setup



Ergonomic
aluminum handle
comes in a
package



Protective case
for VL 15000P
Pro Mini.
Sold separately



FILFLUORO 15000
Fluorodive filter for
VL 15000P Pro Mini.
Sold separately.

VL15000P Pro Mini Tri Color

Li ion Rechargeable Battery Super Power LED
Video Light with Three Color Output



Features



3 Levels of brightness for cool white mode, 3 Levels of brightness for warm white mode, 1 level of brightness of Red color mode and SOS controlled by a reliable push button design



Battery level indicator built-in: Blue color / Green color / Red color / Flash Red color



BATCELL18650x7 Li ion Rechargeable Battery



Built-in red color led enhances focusing performance



15000 LUMENS

Angle of light beam

160° wide beam

SPECIFICATIONS

Light source	: 32 x XML LED + 8 x XPE Red LED
Light output	: 3750 Lm (level I), 7500 Lm (level II)
(Cool white mode)	15000 Lm (level III)
Light output	: 1500 Lm (level I), 3000 Lm (level II)
(Warm white mode)	6000 Lm (level III)
Light output	: 1000 Lm
(Red color mode)	
Casing material	: Aluminum alloy.
	Anti-corrosive anodized
Power source	: Li ion Rechargeable battery pack
	BATCELL18650x7
Angle of light beam	: 160° wide beam
Color temperature	: 6500K cool white and 5500K
	warm white
Burn time	: 2 hrs (level III), 4 hrs(level II) and
	8 hrs(level I)
Maximum depth	: 100 m tested
Size	: Dia. 70 x L. 131mm
Weight in air	: 815 g (including battery)
Buoyancy in seawater	: -356 g (including battery)
Switching system	: Push button with battery
	indicator
Front glass	: Tempered optical glass



Built-in yellow color led enhances warmer color tone



Comes with ball joint for easy system setup



Ergonomic aluminum handle comes in a package



Protective case for VL 15000P Pro Mini Tri Color. Sold separately



FILFLUORO 15000 Fluorodrive filter for VL 15000P Pro Mini Tri Color. Sold separately.

VL30000P Mini

Li ion Rechargeable Battery
Ultra Power LED Video Light



Features



4 levels of brightness,
1 level of brightness of
Red color mode and
SOS controlled by a
reliable push button
design



Battery level indicator
built-in: Blue color /
Green color / Red color
/ Flash Red color



Easy to charge up the
battery pack
BATCELL26650x8



Built-in red color led
enhances focusing
performance



SPECIFICATIONS

Light source	: 45 x XML LED + 10 x XPE Red LED
Light output	: 3000 Lm (level I), 7500 Lm (level II) 15000 Lm (level III), 30000 Lm (level IV)
Light output (Red color mode)	: 1200 Lm
Casing material	: Aluminum alloy. Anti-corrosive anodized
Power source	: Li ion Rechargeable battery pack BATCELL26650x8
Angle of light beam	: 160° wide beam
Color temperature	: 6500K
Burn time	: 2 hrs (level IV), 4 hrs(level III) 8hrs(level II) and 20 hrs (level I)
Maximum depth	: 100 m tested
Size	: Dia. 100 x L. 137.6mm
Weight in air	: 1700 g (including battery)
Buoyancy in seawater	: -611 g (including battery)
Switching system	: Push button with battery indicator
Front glass	: Tempered optical glass

The Most
Brightness
**30000
LUMENS**

Angle of light beam
160°



45pcs XML LED to
provide 30000 lumens



Comes with ball joint
for easy system setup



Ergonomic aluminum
handle comes in a
package



Protective case for
VL 30000P Mini.
Sold separately

VL8300P

Li ion Rechargeable Battery High Power
LED Video Light



Features



4 Levels of brightness,
1 level of brightness of
Red color mode and
SOS controlled by a
reliable push button
design



Battery level indicator
built-in: Blue color /
Green color / Red color
/ Flash Red color



BATCELL18650x4
Li ion Rechargeable
Battery



Built-in red color led
enhances focusing
performance



SPECIFICATIONS

Light source	: 15 x XML LED + 6 x XPE Red LED
Light output	: 830 Lm (level I), 2075 Lm (level II) 4150 Lm (level III), 8300 Lm (level IV)
Light output (Red color mode)	: 500 Lm
Casing material	: Aluminum alloy. Anti-corrosive anodized
Power source	: Li ion Rechargeable battery pack BATCELL I8650x4
Angle of light beam	: 120° wide beam
Color temperature	: 6500K
Burn time	: 2.5 hrs (level IV), 5 hrs(level III) 10 hrs(level II) and 25 hrs (level I)
Maximum depth	: 100 m tested
Size	: Dia. 55.4 x L. 130.6mm
Weight in air	: 457 g (including battery)
Buoyancy in seawater	: -173 g (including battery)
Switching system	: Push button with battery indicator
Front glass	: Tempered optical glass
Lanyard	: Included



Removable yellow filter
enhances warmer color
tone



Sturdy glove for
hands-free operation
underwater



Comes with ball joint
for easy system setup

VL6500P^{TRi} color

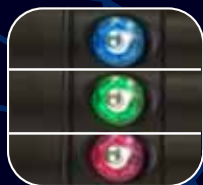
Li ion Rechargeable Battery High Power LED Video
Light with Three Color Output



Features



3 Levels of brightness for cool white mode,
3 Levels of brightness for warm white mode
1 level of brightness of Red color mode and SOS
controlled by a reliable push button design



Battery level indicator
built-in: Blue color /
Green color / Red color
/ Flash Red color



BATCELL18650x4
Li ion Rechargeable
Battery

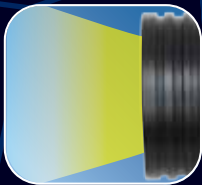


Built-in red color led
enhances focusing
performance



SPECIFICATIONS

Light source	: 15 x XML LED + 6 x XPE Red LED
Light output	: 1625 Lm (level I), 3250 Lm (level II)
(Cool white mode)	6500 Lm (level III)
Light output	: 812 Lm (level I), 1625 Lm (level II)
(Warm white mode)	3250 Lm (level III)
Light output	: 500 Lm
(Red color mode)	
Casing material	: Aluminum alloy. Anti-corrosive anodized
Power source	: Li ion Rechargeable battery pack BATCELL18650x4
Angle of light beam	: 120° wide beam
Color temperature	: 6500K cold white and 5500K warm white
Burn time	: 3 hrs (level III), 6 hrs(level II) and 12 hrs(level I)
Maximum depth	: 100 m tested
Size	: Dia. 55.4 x L. 130.6mm
Weight in air	: 457 g (including battery)
Buoyancy in seawater	: -173 g (including battery)
Switching system	: Push button with battery indicator
Front glass	: Tempered optical glass
Lanyard	: Included



Built-in yellow color led enhances warmer color tone



Sturdy glove for hands-free operation underwater



Comes with ball joint for easy system setup

VTL6000P

Li ion Rechargeable Battery High Power LED Video /
Tech Light



Features



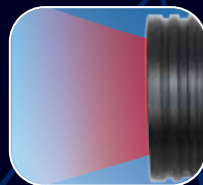
4 Levels of brightness for Flood beam mode, 1 level of brightness for Spot beam mode and 1 level of brightness for Red color mode controlled by a reliable push button design



Battery level indicator built-in: Blue color / Green color / Red color / Flash Red color



BATCELL 18650x4
Li ion Rechargeable
Battery



Built-in red color led enhances focusing performance



SPECIFICATIONS

Light source	: 11 x XML LED + 6 x XPE Red LED
Light output	: 600 Lm (level I), 1500 Lm (level II)
(Flood beam mode)	: 3000 Lm (level III), 6000 Lm (level IV)
Light output	: 1000 Lm
(Spot beam mode)	
Light output	: 500 Lm
(Red color mode)	
Casing material	: Aluminum alloy. Anti-corrosive anodized
Power source	: Li ion Rechargeable battery pack BATCELL18650x4
Angle of light beam	: 120° wide beam and 10° narrow beam
Color temperature	: 6500K
Burn time	: 3 hrs (level IV), 6 hrs(level III) 12 hrs(level II) and 30 hrs (level I)
Maximum depth	: 100 m tested
Size	: Dia. 55.4 x L. 152.3mm
Weight in air	: 498 g (including battery)
Buoyancy in seawater	: -161 g (including battery)
Switching system	: Push button with battery indicator
Front glass	: Tempered optical glass
Lanyard	: Included



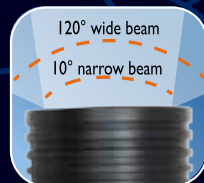
Removable yellow
filter enhances
warmer color tone



Sturdy glove for
hands-free operation
underwater



Comes with ball joint
for easy system setup



Angle of light beam

TL4500P

Li ion Rechargeable Battery
High Power LED Tech Light



Features



4 Levels of brightness
and SOS controlled by a
reliable push button
design



Battery level indicator
built-in: Blue color /
Green color / Red color
/ Flash Red color



BATCELL18650x4
Li ion Rechargeable
Battery



Sturdy Goodman
Glove for handy
Tech-dive operation



SPECIFICATIONS

Light source	: 4 x XML LED
Light output	: 450 Lm (level I), 1125 Lm (level II) 2250 Lm (level III), 4500 Lm (level IV)
Casing material	: Aluminum alloy. Anti-corrosive anodized
Power source	: Li ion Rechargeable battery pack BATCELL18650x4
Angle of light beam	: 10° narrow beam
Color temperature	: 6500K
Burn time	: 2 hrs (level IV), 4 hrs(level III) 8 hrs(level II) and 20 hrs (level I)
Maximum depth	: 100 m tested
Size	: Dia. 72 x L. 150.3mm
Weight in air	: 596 g (including battery)
Buoyancy in seawater	: -222 g (including battery)
Switching system	: Push button with battery indicator
Front glass	: Tempered optical glass
Lanyard	: Included



Ergonomic aluminum
handle comes in a
package



GHA-01C
or SFGHA-01C

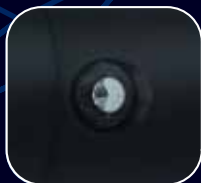
Goodman handle
with connector or
Slim fit Goodman
handle with connector.
Sold separately

TL4500PC^{Slim}

Li ion Rechargeable Battery High Power
LED Tech Light with Battery Canister



Features



4 Levels of brightness
and SOS controlled by a
reliable push button
design



Battery level indicator
built-in: Blue color /
Green color / Red color
/ Flash Red color



BATCELL 18650x8
Li ion Rechargeable
Battery



Ergonomic aluminum
handle comes in a
package



SPECIFICATIONS

Light source	: 4 x XML LED
Light output	: 450 Lm (level I), 1125 Lm (level II) 2250 Lm (level III), 4500 Lm (level IV)
Casing material	: Aluminum alloy. Anti-corrosive anodized
Power source	: Li ion Rechargeable battery pack BATCELL 18650x8
Angle of light beam	: 10° narrow beam
Color temperature	: 6500K
Burn time	: 7 hrs (level IV), 14 hrs(level III) 28 hrs(level II) and 70 hrs (level I)
Maximum depth	: 100 m tested
Size (Light head)	: Dia. 72 x L. 88.3mm
Size (Canister)	: Dia. 55 x L. 181.5mm
Weight in air (Light head)	380g
Weight in air (Canister)	: 713g
Buoyancy in seawater: (Light head)	-134g
Buoyancy in seawater: (Canister)	-267g
Switching system	: Push button with battery indicator
Front glass	: Tempered optical glass



SFGHA-01C

Slim fit Goodman handle with connector. Comes in a package



Easy to charge up the canister



90 degree sidemount connector cable. Sold seperately.



TL4500PCLH light head and Canister for TL4500PC Slim can buy seperately.

TL18000P

Li ion Rechargeable Battery
Super Power LED Tech Light



Features



4 Levels of brightness
and SOS controlled by a
reliable push button
design



Battery level indicator
built-in: Blue color /
Green color / Red color
/ Flash Red color



Easy to charge up the
battery pack
BATCELL15K



SPECIFICATIONS

Light source	: 14 x XML LED
Light output	: 1800 Lm (level I), 4500 Lm (level II) 9000 Lm (level III), 18000 Lm (level IV)
Casing material	: Aluminum alloy. Anti-corrosive anodized
Power source	: Li ion Rechargeable battery pack BATCELL15K
Angle of light beam	: 10° narrow beam
Color temperature	: 6500K
Burn time	: 3 hrs (level IV), 6 hrs(level III) 12 hrs(level II) and 30 hrs (level I)
Maximum depth	: 100 m tested
Size	: Dia. 124 x L. 174.5mm
Weight in air	: 2465 g (including battery)
Buoyancy in seawater	: -880 g (including battery)
Switching system	: Push button with battery indicator
Front glass	: Tempered optical glass



Ergonomic aluminum
handle comes in a
package



Protective case for
TL 18000P.
Sold separately

TL18000PC

Li ion Rechargeable Battery Super Power LED Tech Light
with Battery Canister



Features



4 Levels of brightness and SOS controlled by a reliable push button design



Battery level indicator built-in: Blue color / Green color / Red color / Flash Red color



BATCELL15K Li ion Rechargeable Battery



Ergonomic aluminum handle comes in a package

18000
lumens

SPECIFICATIONS

Light source	: 14 x XML LED
Light output	: 1800 Lm (level I), 4500 Lm (level II) 9000 Lm (level III), 18000 Lm (level IV)
Casing material	: Aluminum alloy. Anti-corrosive anodized
Power source	: Li ion Rechargeable battery pack BATCELL I5K
Angle of light beam	: 10° narrow beam
Color temperature	: 6500K
Burn time	: 3 hrs (level IV), 6 hrs (level III) 12 hrs (level II) and 30 hrs (level I)
Maximum depth	: 100 m tested
Size (Light head)	: Dia. 124 x L. 105.2mm
Size (Canister)	: Dia. 104 x L. 142mm
Weight in air (Light head)	: 1432g
Weight in air (Canister)	: 1741g
Buoyancy in seawater (Light head)	: -460g
Buoyancy in seawater (Canister)	: -523g
Switching system	: Push button with battery indicator
Front glass	: Tempered optical glass



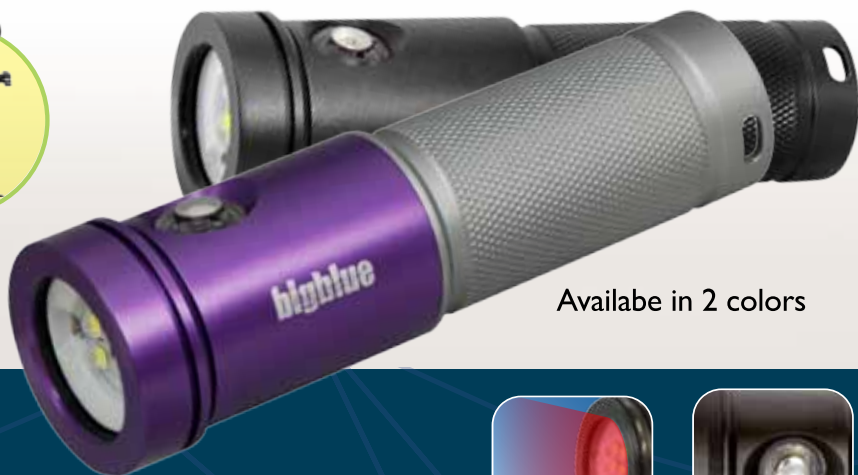
Protective case for
TL 18000PC.
Sold separately



Easy to charge up
the canister

Black Molly II

AL1800XWP_{Tri Color}



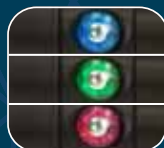
Available in 2 colors

SPECIFICATIONS

Light source	: 4 x XML LED + 2 x XPE Red LED
Light output (Cool white mode)	: 450 Lm (level I), 900 Lm (level II) 1800 Lm (level III)
Light output (Warm white mode)	: 450 Lm (level I), 900 Lm (level II) 1800 Lm (level III)
Light output (Red color mode)	: 150 Lm
Casing material	: Aluminum alloy. Anti-corrosive anodized
Power source	: Li ion Rechargeable battery pack 26650
Angle of light beam	: 120° wide beam
Color temperature	: 6500K cool white and 5500K warm white
Burn time	: 2 hrs (level III), 4 hrs (level II) and 8 hrs (level I)
Maximum depth	: 100 m tested
Size	: Dia. 38.8 x L. 127.5 mm
Weight in air	: 223 g (including battery)
Buoyancy in seawater	: -112 g (including battery)
Switching system	: Push button with battery indicator
Front glass	: Tempered optical glass
Lanyard	: Included



Built-in red color led enhances focusing performance



Battery level indicator built-in: Blue color / Green color / Red color / Flash Red color



BATCELL26650 Li ion Rechargeable Battery



Built in yellow color led enhances warmer color tone



Comes with ball joint for easy system setup

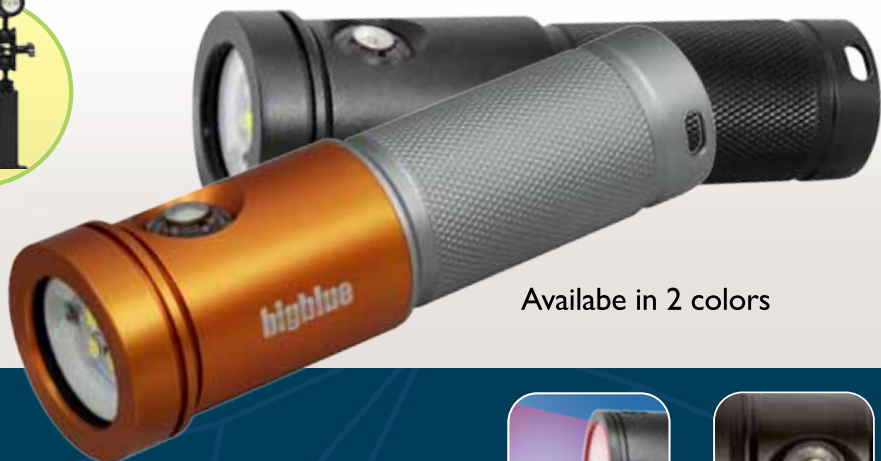


Protective case for AL 1800XWP Tri Color and Single Arm Tray. Sold separately



Protective case for AL 1800XWP Tri Color. Sold separately

Black Molly III AL2600XWP



Available in 2 colors

SPECIFICATIONS

Light source	: 4 × XML LED + 2 × XPE Red LED
Light output	: 260 Lm (level I), 650 Lm (level II) 1300 Lm (level III), 2600 Lm (level IV)
Light output (Red color mode)	: 150 Lm
Casing material	: Aluminum alloy. Anti-corrosive anodized
Power source	: Li ion Rechargeable battery pack 26650
Angle of light beam	: 120° wide beam
Color temperature	: 6500K
Burn time	: 2 hrs (level IV), 4 hrs (level III) 8 hrs (level II) and 20 hrs (level I)
Maximum depth	: 100 m tested
Size	: Dia. 38.8 × L. 127.5 mm
Weight in air	: 223 g (including battery)
Buoyancy in seawater	: -112 g (including battery)
Switching system	: Push button with battery indicator
Front glass	: Tempered optical glass
Lanyard	: Included



Built-in red color led enhances focusing performance



4 levels of brightness, 1 level of brightness of Red color mode and SOS controlled by a reliable push button design



Battery level indicator built-in: Blue color / Green color / Red color / Flash Red color



Removable yellow filter enhances warmer color tone



BATCELL26650 Li ion Rechargeable Battery



Comes with ball joint for easy system setup



Protective case for AL 2600XWP and Single Arm Tray. Sold separately



Protective case for AL 2600XWP. Sold separately

AL1100AFO

**Li ion Rechargeable Battery Wide Beam
LED Light with Auto-Flash Off Function**



SPECIFICATIONS

Light source	: XML LED
Light output	: 110 Lm (level I), 275 Lm (level II) 550 Lm (level III), 1100 Lm (level IV)
Casing material	: Aluminum alloy. Anti-corrosive anodized
Power source	: Li ion Rechargeable battery pack 18650
Angle of light beam	: 55° wide beam
Color temperature	: 6500K
AFO interval	: 1 sec. +/- 0.3 sec.
Burn time	: 2 hrs (level IV), 5 hrs (level III) 10 hrs (level II) and 20 hrs (level I)
Maximum depth	: 100 m tested
Size	: Dia. 47.4 x L. 128.3 mm
Weight in air	: 264 g (including battery)
Buoyancy in seawater	: -135g (including battery)
Switching system	: Push button with battery indicator
Front glass	: Tempered optical glass
Lanyard	: Included



4 Levels of brightness
and SOS controlled by
a reliable push button
design



Battery level indicator
built-in: Blue color /
Green color / Red color
/ Flash Red color



BATCELL 18650 Li ion
Rechargeable Battery



Comes with ball joint
for easy system setup



Automatic Flash Off
Function AFO interval :
1 sec. +/- 0.3 sec.



Removable red filter
enhances focusing
performances

AL1200NP

Li ion Rechargeable Battery Narrow
Beam LED Light



SPECIFICATIONS

Light source	: XML LED
Light output	: 120 Lm (level I), 300 Lm (level II) 600 Lm (level III), 1200 Lm (level IV)
Casing material	: Aluminum alloy. Anti-corrosive anodized
Power source	: Li ion Rechargeable battery pack 18650
Angle of light beam	: 10° narrow beam
Color temperature	: 6500K
Burn time	: 2 hrs (level IV), 5 hrs(level III) 10 hrs(level II) and 20 hrs (level I)
Maximum depth	: 100 m tested
Size	: Dia. 35 x L. 145.1 mm
Weight in air	: 178 g (including battery)
Buoyancy in seawater	: -79 g (including battery)
Switching system	: Push button with battery indicator
Front glass	: Tempered optical glass
Lanyard	: Included



4 Levels of brightness
and SOS controlled by
a reliable push button
design



Battery level indicator
built-in: Blue color /
Green color / Red color
/ Flash Red color



BATCELL 18650 Li ion
Rechargeable Battery



Protective case for
AL1200NP.
Sold separately



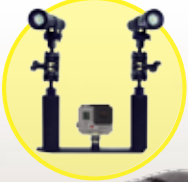
Our light can fit in
glove or pouch. Sold
separately.



FILREDNP Red filter for
AL1200NP.
Sold separately.

AL 1200WP

Li ion Rechargeable Battery Wide Beam
LED Light



SPECIFICATIONS

Light source	: XML LED
Light output	: 120 Lm (level I), 300 Lm (level II) 600 Lm (level III), 1200 Lm (level IV)
Casing material	: Aluminum alloy. Anti-corrosive anodized
Power source	: Li ion Rechargeable battery pack 18650
Angle of light beam	: 85° wide beam
Color temperature	: 6500K
Burn time	: 2 hrs (level IV), 5 hrs (level III) 10 hrs (level II) and 20 hrs (level I)
Maximum depth	: 100 m tested
Size	: Dia. 38.8 x L. 134 mm
Weight in air	: 182 g (including battery)
Buoyancy in seawater	: -92 g (including battery)
Switching system	: Push button with battery indicator
Front glass	: Concave lens
Lanyard	: Included



Battery level indicator
built-in: Blue color /
Green color / Red color
/ Flash Red color



4 Levels of brightness
and SOS controlled by
a reliable push button
design



Comes with the clip for
easy system setup



BATCELL 18650 Li ion
Rechargeable Battery



Our light can fit in
glove or pouch. Sold
separately.



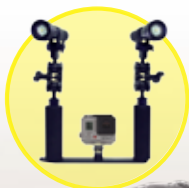
Removable red and
yellow filters enhances
focusing performances
and warm color tone



Protective case for
AL 1200WP.
Sold separately

AL1200XWP

Li ion Rechargeable Battery Extra Wide
Beam LED Light



SPECIFICATIONS

Light source	: XML LED
Light output	: 120 Lm (level I), 300 Lm (level II) 600 Lm (level III), 1200 Lm (level IV)
Casing material	: Aluminum alloy. Anti-corrosive anodized
Power source	: Li ion Rechargeable battery pack 18650
Angle of light beam	: 120° wide beam
Color temperature	: 6500K
Burn time	: 2 hrs (level IV), 5 hrs (level III) 10 hrs (level II) and 20 hrs (level I)
Maximum depth	: 100 m tested
Size	: Dia. 38.8 x L. 127.5 mm
Weight in air	: 170 g (including battery)
Buoyancy in seawater	: -85 g (including battery)
Switching system	: Push button with battery indicator
Front glass	: Tempered optical glass
Lanyard	: Included



Battery level indicator
built-in: Blue color /
Green color / Red color
/ Flash Red color



4 Levels of brightness
and SOS controlled by
a reliable push button
design



Comes with the clip for
easy system setup



BATCELL 18650 Li ion
Rechargeable Battery



Our light can fit in
glove or pouch. Sold
separately.



Removable red and
yellow filters enhances
focusing performances
and warm color tone



Protective case for
AL 1200XWP.
Sold separately

CF1 200P



**Li ion Rechargeable Battery Changeable
Focus LED Light**

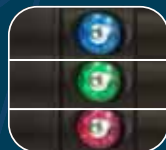


SPECIFICATIONS

Light source	: XML LED
Light output	: 120 Lm (level I), 300 Lm (level II) 600 Lm (level III), 1200 Lm (level IV)
Casing material	: Aluminum alloy. Anti-corrosive anodized
Power source	: Li ion Rechargeable battery pack 18650
Angle of light beam	: 7° narrow beam to 37° wide beam
Color temperature	: 6500K
Burn time	: 2 hrs (level IV), 5 hrs (level III) 10 hrs (level II) and 20 hrs (level I)
Maximum depth	: 100 m tested
Size	: Dia. 39.5 x L. 172.1 mm
Weight in air	: 250 g (including battery)
Buoyancy in seawater	: -117 g (including battery)
Switching system	: Push button with battery indicator
Front glass	: Tempered optical glass
Lanyard	: Included



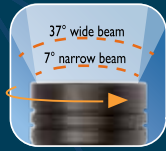
4 Levels of brightness
and SOS controlled by
a reliable push button
design



Battery level indicator
built-in: Blue color /
Green color / Red color
/ Flash Red color



BATCELL 18650 Li ion
Rechargeable Battery



Twist the front to
change the focus
(Turning force
increases with depth)

TL3100P^{Supreme}

Li ion Rechargeable Battery LED Tech Light

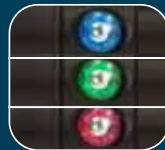


SPECIFICATIONS

Light source	: 3 x XML LED
Light output	: 310 Lm (level I), 775 Lm (level II) 1550 Lm (level III), 3100 Lm (level IV)
Casing material	: Aluminum alloy. Anti-corrosive anodized
Power source	: Li ion Rechargeable battery pack BATCELL18650x4SUPREME
Angle of light beam	: 10° narrow beam
Color temperature	: 6500K
Burn time	: 3 hrs (level IV), 6 hrs(level III) 12 hrs (level II) and 30 hrs (level I)
Maximum depth	: 100 m tested
Size	: Dia. 63x L. 119 mm
Weight in air	: 517 g (including battery)
Buoyancy in seawater	: -221 g (including battery)
Switching system	: Push button with battery indicator
Front glass	: Tempered optical glass
Lanyard	: Included



4 Levels of brightness and SOS controlled by a reliable push button design



Battery level indicator built-in: Blue color / Green color / Red color / Flash Red color



BATCELL18650x4 SUPREME
Li ion Rechargeable
Battery



Ergonomic aluminum
handle comes in a
package



Sturdy Goodman Glove
for handy Tech-dive
operation



Goodman handle
with connector or
Slim fit Goodman handle
with connector. Sold
separately

TL3100P

Li ion Rechargeable Battery LED Tech Light



SPECIFICATIONS

Light source	: 3 x XML LED
Light output	: 310 Lm (level I), 775 Lm (level II) 1550 Lm (level III), 3100 Lm (level IV)
Casing material	: Aluminum alloy. Anti-corrosive anodized
Power source	: Li ion Rechargeable battery pack 32650
Angle of light beam	: 10° narrow beam
Color temperature	: 6500K
Burn time	: 1.5 hrs (level IV), 3 hrs(level III) 6 hrs (level II) and 15 hrs (level I)
Maximum depth	: 100 m tested
Size	: Dia. 63x L. 135.6 mm
Weight in air	: 447 g (including battery)
Buoyancy in seawater	: -217 g (including battery)
Switching system	: Push button with battery indicator
Front glass	: Tempered optical glass
Lanyard	: Included



4 Levels of brightness and SOS controlled by a reliable push button design



Battery level indicator built-in: Blue color / Green color / Red color / Flash Red color



BATCELL 32650 Li ion Rechargeable Battery



Ergonomic aluminum handle comes in a package



Sturdy Goodman Glove for handy Tech-dive operation



Goodman handle with connector or Slim fit Goodman handle with connector. Sold separately

VTL3100P

Li ion Rechargeable Battery LED Video /
Tech Light



120°
Wide beam
10°
Narrow beam

SPECIFICATIONS

Light source	: 7 × XML LED + 2 × XPE Red LED
Light output (Flood beam mode)	: 310 Lm (level I), 775 Lm (level II) 1550 Lm (level III), 3100 Lm (level IV)
Light output (Spot beam mode)	: 1000 Lm
Light output (Red color mode)	: 100 Lm
Casing material	: Aluminum alloy. Anti-corrosive anodized
Power source	: Li ion Rechargeable battery pack 32650
Angle of light beam	: 120° wide beam and 10° narrow beam
Color temperature	: 6500K
Burn time	: 1.5 hrs (level IV), 3 hrs (level III) 6 hrs (level II) and 15 hrs (level I)
Maximum depth	: 100 m tested
Size	: Dia. 55.5 × L. 140.6 mm
Weight in air	: 432 g (including battery)
Buoyancy in seawater	: -205 g (including battery)
Switching system	: Push button with battery indicator
Front glass	: Tempered optical glass
Lanyard	: Included



Sturdy glove for
hands-free operation
underwater



4 levels of brightness for
Flood beam mode,
1 level of brightness for
Spot beam mode and 1
level of brightness for Red
color mode controlled by a
reliable push button design



Built-in red color led
enhances focusing
performance



Removable yellow filter
enhances warmer color
tone



Battery level indicator
built-in: Blue color /
Green color / Red
color / Flash Red
color



Angle of light beam



BATCELL 32650 Li ion
Rechargeable Battery



Comes with ball joint
for easy system setup

VL3500P

Li ion Rechargeable Battery LED Video Light



**Best
For Video**
120°
Angle of light
beam

SPECIFICATIONS

Light source	: 6 x XML LED + 4 x XPE Red LED
Light output (Flood beam mode)	: 350Lm (level I), 875 Lm (level II) 1750 Lm (level III), 3500 Lm (level IV)
Light output (Red color mode)	: 200 Lm
Casing material	: Aluminum alloy. Anti-corrosive anodized
Power source	: Li ion Rechargeable battery pack 32650
Angle of light beam	: 120° wide beam
Color temperature	: 6500K
Burn time	: 1.5 hrs (level IV), 3 hrs(level III) 6 hrs(level II) and 15 hrs (level I)
Maximum depth	: 100 m tested
Size	: Dia. 52.5 x L. 118.1 mm
Weight in air	: 343 g (including battery)
Buoyancy in seawater	: -169 g (including battery)
Switching system	: Push button with battery indicator
Front glass	: Tempered optical glass
Lanyard	: Included



Sturdy glove for
hands-free operation
underwater



4 levels of brightness
for Flood beam mode, 1
level of brightness of Red
color mode and SOS
controlled by a reliable
push button design



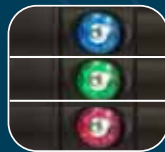
BATCELL 32650 Li ion
Rechargeable Battery



Built-in red color led
enhances focusing
performance



Comes with ball joint
for easy system setup



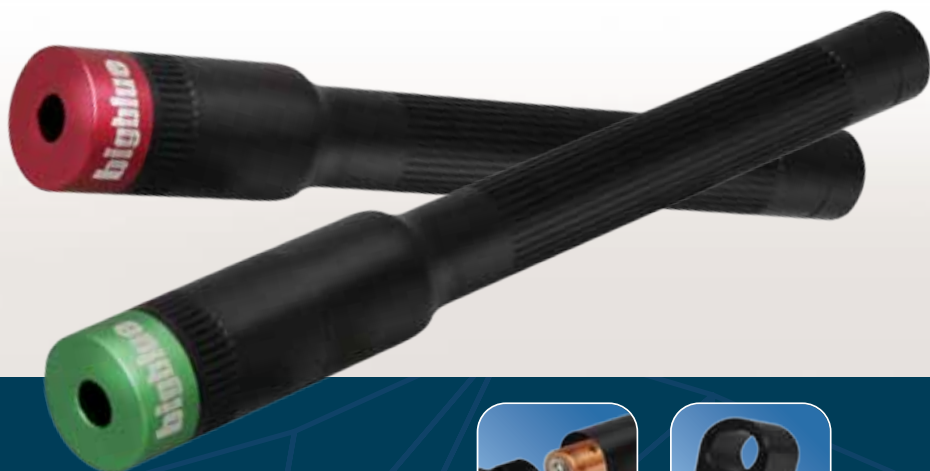
Battery level indicator
built-in: Blue color /
Green color / Red
color / Flash Red color



Removable yellow filter
enhances warmer color
tone

Green Spot Light

Red Spot Light



Operate with
2 x AAA batteries



CLIPMNTSPOT
Mounting clip for Green Spot Light
and Red Spot Light. Sold separately.

SPECIFICATIONS

	Green Spot Light	Red Spot Light
Light source	: Green Laser	Red Laser
Light output	: Below 1 mW	Below 1 mW
Casing material	: Aluminum alloy. Anti-corrosive anodized	Aluminum alloy. Anti-corrosive anodized
Power source	: 2 x AAA alkaline or Ni-MH batteries	2 x AAA alkaline or Ni-MH batteries
Wavelength	: 520nm	650nm
Burn time	: Up to 24 hrs	Up to 24 hrs
Maximum depth	: 100 m tested	100 m tested
Size	: Dia. 19 x L. 168.6 mm	Dia. 19 x L. 154.1 mm
Weight in air	: 89 g (including batteries)	82 g (including batteries)
Buoyancy in seawater	: -54 g (including batteries)	-51 g (including batteries)
Switching system	: Twisting Bezel	Twisting Bezel
Front glass	: Tempered optical glass	Tempered optical glass
Lanyard	: Included	Included



LIGHT HEAD



VTL 6000PLH



TL 4500PLH



VTL 3100PLH



TL 3100PLH



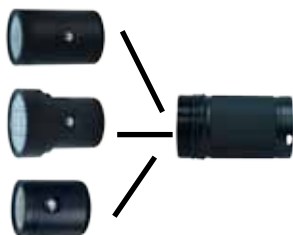
AL 1200NPLH



AL 1200WPLH



AL 1200XWPLH



Light heads can fit for VTL 6000P, TL 4500P, VL 8300P & VL 6500P Tri Color.

VL 8300PLH/ VL 6500PLH Tri Color



Light heads can fit for VTL 3100P, TL 3100P & VL 3500P.

VL 3500PLH



Light heads can fit for AL 1200NP, AL 1200WP, AL 1200XWP & AL 1100AFO.

AL 1100AFO LH

Easy Clip Multi-color Light



SPECIFICATIONS

- Available eleven color output – Red, Green, Blue, Purple, Yellow, Flash red, Flash green, Flash blue, Flash purple, Flash yellow, automatically run all ten modes.
- 12-24 hrs of burn time
- 2 x CR2032 batteries
- Dia. 32 x L. 38mm
- 100 meter tested
- Lanyard included
- 23g (including batteries) weight in air
- -3g (including batteries) buoyancy in seawater

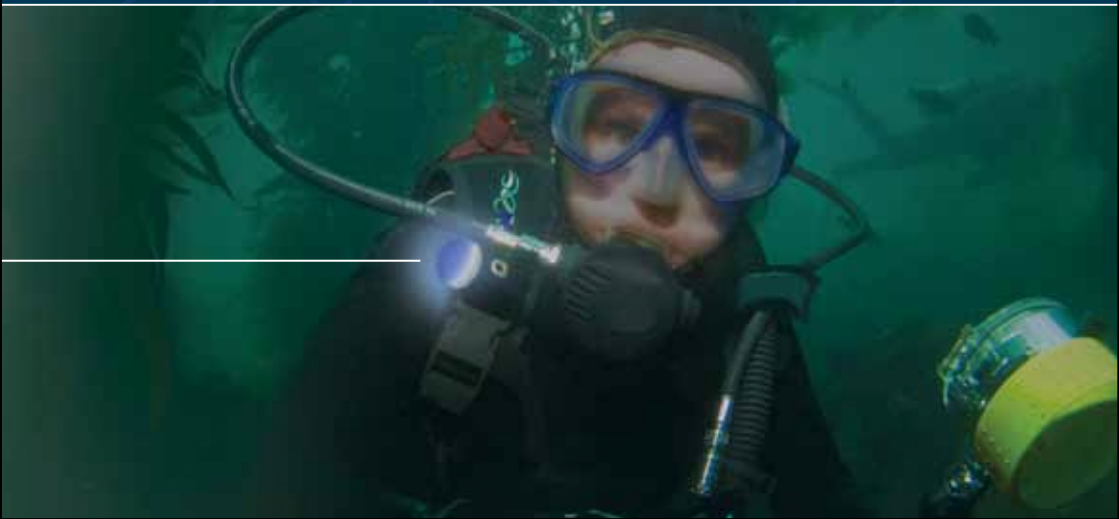
Easily clip the light on the
goggle, mask, belt and etc.

Easy Clip Light



SPECIFICATIONS

- Available three color output – Blue, Red, Green
- Up to 72 hrs of burn time
- 2 x CR2032 batteries
- Dia. 32 x L. 38mm
- 100 meter tested
- Lanyard included
- 23g (including batteries) weight in air
- -3g (including batteries) buoyancy in seawater



HL1000N

Li ion Rechargeable Battery
Narrow Beam LED HEAD Light



SPECIFICATIONS

Light source	: Cree LED
Light output	: 100 Lm (level I), 250 Lm (level II) 500 Lm (level III), 1000 Lm (level IV)
Casing material	: Aluminum alloy light head and Polycarbonate body
Power source	: Li ion Rechargeable battery pack BATCELL18650
Angle of light beam	: 8° narrow beam
Color temperature	: 6500K
Burn time	: 2hrs (level IV), 4 hrs(level III) 8hrs(level II) and 20hrs (level I)
Maximum depth	: 100 m tested
Size	: Dia. 36.8 x L. 84.4mm with light head dia. 41 mm
Weight in air	: 205g (including batteries)
Buoyancy in seawater	: -74g (including batteries)
Switching system	: Push button with battery indicator
Front glass	: Tempered optical glass



4 levels of brightness
and SOS controlled by
a reliable push button
design



Battery level indicator
built-in: Blue color /
Green color / Red
color / Flash Red color



BATCELL18650 Li ion
Rechargeable Battery



FILREDHLN Red filter
for HL 1000N.
Sold separately.

HL1000XW

Li ion Rechargeable Battery
Extra Wide Beam LED HEAD Light



SPECIFICATIONS

Light source	: 2x XML LED + 2 x XPE Red LED
Light output	: 100 Lm (level I), 250 Lm (level II) 500 Lm (level III) 1000 Lm (level IV)
Light output (Red color mode)	: 150 Lm
Casing material	: Aluminum alloy light head and Polycarbonate body
Power source	: Li ion Rechargeable battery pack 18650
Angle of light beam	: 120° wide beam
Color temperature	: 6500K
Burn time	: 2 hrs (level IV), 4 hrs(level III) 8 hrs(level II) and 20 hrs (level I)
Maximum depth	: 100 m tested
Size	: Dia. 36.8 x L. 84.4mm with light head dia. 38.8mm
Weight in air	: 207g (including battery)
Buoyancy in seawater	: -76g (including battery)
Switching system	: Push button with battery indicator
Front glass	: Tempered optical glass



Built-in red color led
enhances focusing
performance



4 levels of brightness,
1 level of brightness of
Red color mode and SOS
controlled by a reliable
push button design



Battery level indicator
built-in: Blue color /
Green color / Red
color / Flash Red color



BATCELL18650 Li ion
Rechargeable Battery

HL450XW

Extra Wide Beam LED HEAD Light



SPECIFICATIONS

Light source	: 2x XML LED + 2 x XPE Red LED
Light output	: 45 Lm (level I), 113 Lm (level II) 225 Lm (level III) 450 Lm (level IV)
Light output (Red color mode)	: 100 Lm
Casing material	: Aluminum alloy light head and Polycarbonate body
Power source	: 3 x AAA alkaline batteries
Angle of light beam	: 120° wide beam
Color temperature	: 6500K
Burn time	: 2 hrs (level IV), 4 hrs(level III) 8 hrs(level II) and 20 hrs (level I)
Maximum depth	: 100 m tested
Size	: Dia. 36.8 x L. 84.4mm with light head dia. 38.8mm
Weight in air	: 189g (including batteries)
Buoyancy in seawater	: -58g (including batteries)
Switching system	: Push button with battery indicator
Front glass	: Tempered optical glass



Built-in red color led
enhances focusing
performance



4 levels of brightness,
1 level of brightness of
Red color mode and SOS
controlled by a reliable
push button design



Battery level indicator
built-in: Blue color /
Green color / Red
color / Flash Red color



3 x AAA alkaline
batteries

HL450N

Narrow Beam LED HEAD Light

450
lumens



SPECIFICATIONS

Light source	: Cree LED
Light output	: 45 Lm (level I), 113 Lm (level II) 225 Lm (level III), 450 Lm (level IV)
Casing material	: Aluminum alloy light head and Polycarbonate body
Power source	: 3 x AAA alkaline batteries
Angle of light beam	: 8° narrow beam
Color temperature	: 6500K
Burn time	: 2hrs (level IV), 4 hrs(level III) 8hrs(level II) and 20hrs (level I)
Maximum depth	: 100 m tested
Size	: Dia. 36.8 x L. 84.4mm with light head dia. 41mm
Weight in air	: 187g (including batteries)
Buoyancy in seawater	: -56g (including batteries)
Switching system	: Push button with battery indicator
Front glass	: Tempered optical glass



4 levels of brightness
and SOS controlled by
a reliable push button
design



3 x AAA alkaline
batteries



Battery level indicator
built-in: Blue color /
Green color / Red
color / Flash Red color



FILREDHLN Red
filter for HL 450N.
Sold separately.

CF450



Available in 3 colors



Twist the front to change the focus
(Turning force increases with depth)



Magnetic Swivel Switch allows
for one hand operation



3xAAA stand-alone
battery holder



CF 450 LED with Glove



CF 450 LED with Pouch



CF 450 LED with Pouch and Glove

SPECIFICATIONS

- 450 Lumens Cree LED
- Aluminum Alloy, anti-corrosive anodized
- 3xAAA alkaline or Ni-MH batteries
- Up to 4hrs of burn time
- Lanyard included
- 100 meter tested
- 235g (including batteries) weight in air
- -113g (including batteries) buoyancy in seawater

AL450WM

450
lumens



3xAAA stand-alone
battery holder



AL 450WM LED with Glove



AL 450WM LED with Pouch



AL 450WM LED with
Pouch and Glove

SPECIFICATIONS

- 450 Lumens Cree LED
- Size : Dia.36 x L.108.8mm
- Aluminum Alloy, anti-corrosive anodized
- 3xAAA alkaline or Ni-MH batteries
- Angle of light beam: 40°
- Up to 4hrs of burn time
- Lanyard included
- 152g (including batteries) weight in air
- -72g (including batteries) buoyancy in seawater

AL450NM_{spotter}

450
lumens



3xAAA stand-alone
battery holder



AL 450NM LED with Glove



AL 450NM LED with Pouch



AL 450NM LED with Pouch
and Glove

SPECIFICATIONS

- 450 Lumens Cree LED
- Size : Dia.42 x L.114.1mm
- Aluminum Alloy, anti-corrosive anodized
- 3xAAA alkaline or Ni-MH batteries
- Angle of light beam: 8°
- Up to 4hrs of burn time
- Lanyard included
- 176g (including batteries) weight in air
- -74g (including batteries) buoyancy in seawater

AL450MAFO

450
lumens



Automatic Flash Off
Function AFO interval :
1 sec. +/- 0.3 sec.



3xAAA stand-alone
battery holder



Removable red filter
enhances focusing
performances

SPECIFICATIONS

- Automatic Flash Off function
- Angle of light beam: 55°
- AFO interval : 1 sec. +/- 0.3 sec.
- 450 Lumens Cree LED
- Size: Dia.48.4 x L119.9mm
- Aluminum Alloy, anti-corrosive anodized
- 3xAAA alkaline or Ni-MH batteries
- Up to 4hrs of burn time
- 100 meters tested
- Lanyard and Clip included
- 228g (including batteries) weight in air
- -99g (including batteries) buoyancy in seawater

AL250

Multi-function Aluminum LED Light



Light is suitable for multi-function



Available in 5 colors



Operate with 2xAA batteries



Our light can fit in glove or pouch. Sold separately.

SPECIFICATIONS

Light source	: 1x XPG LED
Light output	: 250 Lm
Casing material	: Aluminum alloy. Anti-corrosive anodized
Power source	: 2xAA alkaline or Ni-MH batteries
Angle of light beam	: 8° narrow beam
Color temperature	: 6500K
Burn time	: Up to 2 hrs
Maximum depth	: 100 m tested
Size	: Dia. 28 x L. 147.8mm
Weight in air	: 135g (including batteries)
Buoyancy in seawater	: - 85g (including batteries)
Front glass	: Tempered optical glass

Combo Pack

AL 250

Multi-function Aluminum LED Light

AL 1200NP

Li ion Rechargeable battery
Narrow Beam LED Light



Combo Pack

AL 250

Multi-function Aluminum LED Light

AL 1200WP

Li ion Rechargeable battery
Wide Beam LED Light

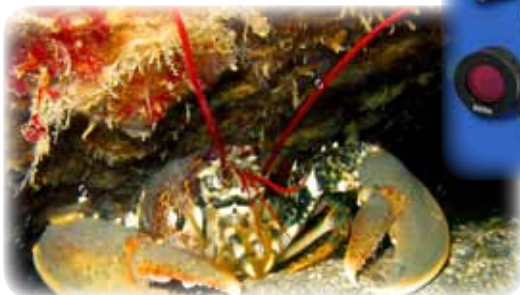


Lobster Kit Set



AL 1200NP x2

FILREDNP X2
Double Hood X1
Charger X1



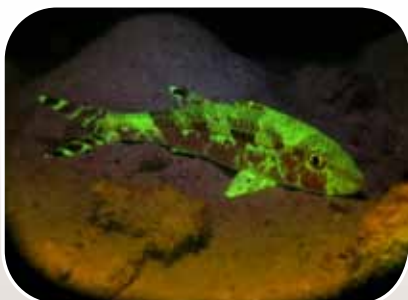
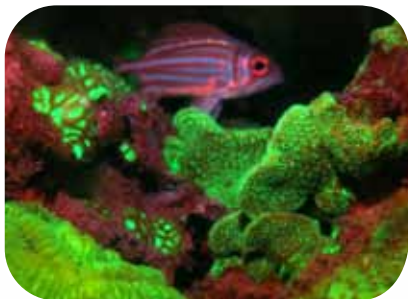
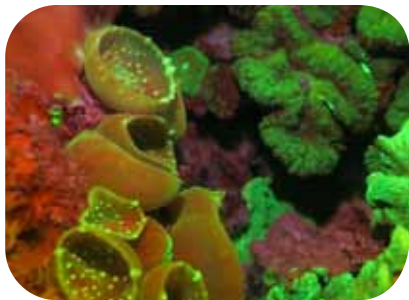
Fluorodive Kit Sets

Science has discovered corals contain Fluorescent Proteins invisible to the naked eye that jump into view using innovative high-intensity fluorolights and filters.

Bigblue Fluorodive Kits provide everything you need to experience this incredibly beautiful effect. You get specially designed filters to precisely match the coral fluorescence wavelength, and yellow blue-barrier filters to increase the intensity of the colors emitted by the corals. Our innovative design is the only one that allows you to easily switch between blue and white light to accommodate changes in dive conditions.

These kits are suitable for night divers, resorts, science institutions, ecological monitoring groups and specialty photographers.

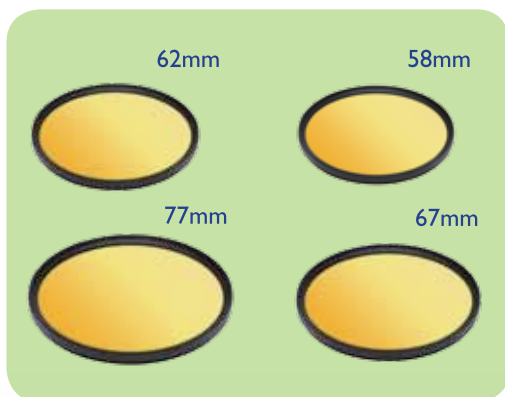
Truly there is nothing that can match the beauty of witnessing coral fluorescence on your next night dive!



Photos of the fluorescence stimulated by the specific wavelength and captured through a barrier filter

Camera Filters

Camera filters are available for you to capture the macro or wide angle photos or videos of the memorable aquatic creatures.



FILFLUORO15000



Fluorodive filter for VL 15000P Pro Mini /
VL 15000P Pro Mini Tri Color



**CF450 / CF1200P / AL1200WP/ AL1200XWP /
BLACK MOLLY II / BLACK MOLLY III / HL1000XW / HL450XW Fluorodive Kit**

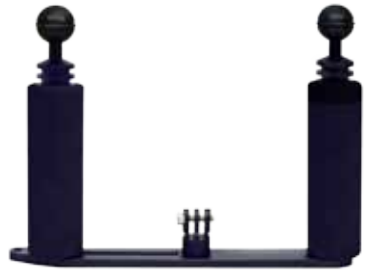


**VL3500P / VTL3100P / VTL6000P / VL8300P
VL6500P Tri Color Fluorodive Kit**



BBGPTray

GO Pro Tray



Go Pro Kit sets

GP3500 Kit

- 1 pc. of Double Clip (CLP02)
- 1 pc. of Go Pro Tray (BBGPTRAY)
- Light not included



GP1200 Kit

- 2 pcs. of Double Clip (CLP02)
- 2 pcs. of Sea & Sea Standard (DA009)
- 1 pc. of Go Pro Tray (BBGPTRAY)
- Lights not included



GP450 Kit

- 2 pcs. of Mounting Clip (CLIPMINTCF)
- 2 pcs. of Double Clip (CLP02)
- 2 pcs. of Sea & Sea Standard (DA009)
- 1 pc. of Go Pro Tray (BBGPTRAY)
- Lights not included



Protective Case for Go Pro Tray Kit Set

- 1 pcs. of ALI200WVP
- 1 pcs. of ALI200XWP
- 2 pcs. of Double Clip (CLP02)
- 2 pcs. of Sea & Sea Standard (DA009)
- 1 pc. of Go Pro Tray (BBGPTRAY)



EXTENDGPTRAY

Extendable GO Pro Tray



SINGLEARMTRAY

Single Arm GO Pro Tray



FLEXIGPTRAY

7" Flexi Arm GO Pro Tray



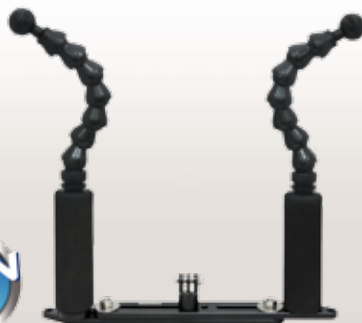
FLEXISINGLEARMTRAY

7" Flexi Arm Single Arm Tray



FLEXIEXTENDGPTRAY

7" Flexi Arm Extendable GO Pro Tray



Protective Case Series



Model :	PC 101	PC 102	PC 103	PC 104	PC 105	PC 106	PC 107
Outer dimension :	230 x 190 x 90 mm	280 x 246 x 106 mm	355 x 272 x 106 mm	355 x 272 x 166 mm	415 x 335 x 120 mm	415 x 335 x 180 mm	546 x 400 x 200 mm
Inner dimension :	207 x 143 x 79 mm	260 x 220 x 93 mm	335 x 230 x 93 mm	335 x 230 x 153 mm	388 x 272 x 108 mm	388 x 272 x 168 mm	490 x 333 x 172 mm
Case can fit for	AL1200NP, AL1200WP, AL1200XWP, CF1200P, Black Molly II, Black Molly III	VL3500P, VTL3100P, TL3100P, TL3100P Supreme	VL8300P, VL6500P Tri Color, VTL6000P, TL4500P	VL30000P Mini, TL18000P, VL15000P Pro Mini, VL15000P Pro Mini Tri Color	Go Pro Tray Kit Set	TL18000PC, TL4500PC Slim	All Purpose

ACCESSORIES



BATCELLI8650

Battery for ALI200NP /
ALI200WVP / ALI200XWVP /
CFI200P / HLI1000XW / HLI1000N



BATCELL26650

Battery for Black Molly II /
Black Molly III



BATCELL32650

Battery for VL3500P / VTL3100P /
TL3100P



BATCELLI8650x4

Battery for VL8300P / VTL6000P /
TL4500P / VL6500P Tri Color



BATCELLI5

Battery for
TL18000P / TL18000PC



BATCELLI8650x7

Battery for VLI5000P Pro Mini /
VLI5000P Pro Mini Tri Color



CR2023

Battery for
Easy Clip Light



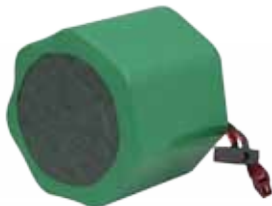
BATCELLI8650x8

Battery for TL4500PC Slim



BATCELLI8650x4SUPREME

Battery for TL3100P Supreme



BATCELL26650x8

Battery for VL30000P Mini



BATCHRI8650x4

Charger for VL8300P / VTL6000P /
TL4500P / VL6500P Tri Color



BATCHRI5K

Charger for
TL 18000P / TL18000PC



**BATCHRI8650x4
SUPREME**

Charger for TL3100P Supreme



BATCHR26650x8

Charger for VL30000P Mini



BATCHRI8650x7

Charger for VLI5000P Pro Mini /
VLI5000P Pro Mini Tri Color

ACCESSORIES



BATCHR32650/26650

Charger for VL3500P /
VTL3100P / TL3100P /
Black Molly II /Black Molly III



BATCHR18650x8

Battery for TL4500PC Slim



BATCHR18650

Charger for AL1200NP / AL1200WP /
AL1200XWP / CF1200P / HL1000XW/
HL1000N



**SIDEMOUNTCONNECTOR
CABLE-90**

90 degree sidemount connector
cable for TL4500PC Slim



CONNECTOR CABLE-180

180 degree connector cable for
TL4500PC Slim



TLGGLOVE

Goodman glove for
TL3100P Supreme



VLGGLOVE

Reinforced goodman glove for VL 3500P /
VTL3100P / TL3100P / VL8300P /
VTL6000P / TL4500P/ VL6500P Tri Color



NPGGLOVE

Neoprene glove for AL1200NP /
AL1200WP / AL1200XWP



NPGGLOVEM

Neoprene glove for Mini Light



NPHOODMS

Neoprene hood for one
light holster



NPHOODMD

Neoprene hood for two
light holster



NPRPOUCH

Neoprene pouch with
retractor for AL1200NP /
AL1200WP / AL1200XWP



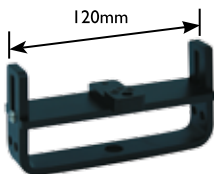
NPRPOUCHM

Neoprene pouch with
retractor for Mini Light



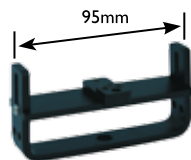
LNTHANDLE

Lantern style handle



GHA-01C

Goodman handle with connector for
TL3100P / TL4500P / TL4500PC Slim /
TL3100P Supreme / TL18000P /
TL18000PC



SFGHA-01C

Slim fit Goodman handle with
connector for TL3100P / TL4500P /
TL4500PC Slim / TL3100P Supreme



CLIPMNTSPOT

Mounting clip for Green Spot Light /
Red Spot Light



CLIPMNTAL

Mounting clip for ALI200WVP /
ALI200XWVP / CF1200P



CLIPMNTCF

Mounting clip for CF450 /
AL450WVM / AL450MAFO



FDMASKYL

Yellow filter for Fluorodiving



FILFLUORO15000

Fluorodive filter for
VLI5000P Pro Mini /
VLI5000P Pro Mini Tri Color



FILREDNP

Red filter for ALI200NP



FILREDHLN

Red filter for HL1000N /
HL450N



FILYELSM

Yellow filter for ALI200WVP /
ALI200XWVP / Black Molly III /
HL450XWV / HL1000XWV



FILREDSM

Red filter for ALI200WVP /
ALI200XWVP



FILYELLG

Yellow filter for VL3500P
/ VTL3100P / VL8300P /
VTL6000P



FILREDMD

Red filter for
AL450MAFO / AL1100AFO

EASY RELEASE MOUNT SERIES



Easy Release Glove



Easy Release Goodman Handle



Easy Release GoPro Mount Glove



Easy Release Slim fit Goodman Handle

PHOTO/VIDEO ARMS & ACCESSORIES

Flexi Arms Series



7" Flexi Arm



9" Flexi Arm



YS ADAPTER



6" Flexi Arm Hot Shoe YS Adapter



6" Flexi Arm Hot Shoe Ball Adapter

Clips

- Made of T6061 grade aluminum
- Available in 2 versions: double clip and a triple clip
- Ergonomic handle makes it easy to twist on and off

CLP 02 Double clip



CLP 03 Triple clip



Arms

- Full T6061 grade aluminum
- Triangular structural design makes it strong and lightweight
- Available in 4 lengths: 5", 8", 12", 16"



DA Series



DA001

Hot Shoe Adapter



DA002

Sea & Sea Adapter



DA003

Light & Motion Adapter



DA004

Standard Dovetail Plate



DA005

8mm Thread



DA006

Sea & Sea Light Adapter



DA007

Sea & Sea Hot Shoe Adapter



DA008

Sea & Sea Medium



DA009

Sea & Sea Standard



DA010

Base Plate Ball Mount



DA011

T-Groove Adapter



DA012

Universal Mount Base



DA013F

1/4" Thread Adapter



DA013M

1/4" Thread Adapter



DA014

Ikelite 200 Strobe Adapter



DA015

Single Ball Arm with Sea & Sea Adapter



DA016

UK Light Adapter



DA017

Standard Dovetail



DA018

Iron Z Series Strobe Adapter



DA022

Slot Stay



DA023

6mm Thread Adapter



Our Distributors & Dealers

Australia Distributor : Adreno

Contact Person : Robbie Lewis
E-mail : robbie@adreno.com.au
Phone : 61-07-3391-2299
Mail : 54-58 Deshon Street, Woolloongabba,
Brisbane, QLD 4102, Australia

Asia Pacific Distributor : Zgear Enterprise

Operations & Customer Service Centre:
The Big Blue Dive Light Club
Contact Person : Ana Clarisa
E-mail : blights@zgear.us
Mail : No.4 Adam Ville, Marigondon Mahayahay,
Lapu Lapu City, Mactan Island, Cebu 6015
Philippines

Business Mailing Address:
Contact Person : Michael Lim
E-mail : michael@zgear.us
Phone : 65-92346561
Mail : Tower 60, West Coast Crescent #05-03,
West Bay Resort, Singapore 128040

Brazil Distributor : Seasub

Contact Person : Pablo Y. Varela
E-mail : pablo@seasub.com.br
Phone : 55-11-38328342
Mail : Rua Baumann, 1039/1051,
Cep 05318000,
Sao Paulo, Brazil

Canada Distributor : Pacific Scuba Industries

Contact Person : Michael Joseph & Laura Valente
E-mail : aurabigblue@outlook.com
Phone : 778-245-1962
Mail : 31519 Southern Dr, Abbotsford, BC V2T5P1,
Canada

Europe Distributor : Dive Technics

Contact Person : Roman Pauwels
E-mail : roman@divetechnics.be
Phone : 32-0-347-504-21
Fax: 32-0-347-504-33
Mail : Pater Domstraat 45A, Broechem 2520,
Belgium

Indonesia Distributor : Divesea Indonesia

Contact Person : Annisa Filania
E-mail : bigblue.id@gmail.com
Phone : 62-85263564617
Mail : APL Tower, 16th Floor, T-1 Central Park,
Podomoro City J1. Let. Jend. S. Parman,
Kav 28, Jakarta Barat, 11470 Indonesia

Japan Distributor : Zero Co., Ltd.

Contact Person : Katsuhiko Saotome
E-mail : zero@zero-zero.co.jp
Phone : 81-3-5721-1906
Fax: 81-3-5721-1910
Mail : 1-11-5 Takaban, Meguro-Ku,
Tokyo, Japan

Korea Distributor : King Sports

Contact Person : Mr. Chang / Yun Hee Chang
E-mail : kingdive@kingsports.co.kr
Phone : 82-2-3628251
Mail : 35-4, 1GA, Manri-Dong, Chung-Gu,
Seoul, Korea

Kuwait Dealer : Hashim Alaqeel Establishment

Contact Person : Abdullah Al Aqeel
E-mail : abdul_72@yahoo.com
Phone : 96-566621121
Mail : Qebla Block: 8, Building : 38, 1st Floor, Office 26
Kuwait City, State of Kuwait

Malaysia Distributor : Rainbow Runner Sdn Bhd

Contact Person : Sim
E-mail : ops@rainbowrunner.net
Phone : 60-341-622837
Fax: 60-341-617837
Mail : 5, Ukay Boulevard, Jalan Lingkaran
Tengah 2, Hulu Kelang, 68000 Ampang,
Selangor, Malaysia

Maldives Dealer : Surf & Scuba Maldives PVT Ltd.

Contact Person : Ali Miuraj
E-mail : bonul.e@gmail.com
Phone : 90-7999341
Mail : Rehendhi 248, Ground Floor
Vili Male 21049
Maldives

New Zealand Distributor : Sea Tech Ltd.

Contact Person : Dave Moran
E-mail : info@seatech.co.nz
Phone : 64-9-5210684
Mail : 47 Tautari St. Orakei, Auckland 1071,
New Zealand



Philippines Distributor :
Dive Supply Subic, INC.

Contact Person : Rowena Merto
E-mail : muriel@aquaventurewhitetip.com
Phone : 63-2-708-9996
Mail : Office 6&7 EMS Building, 14th Street
Subic Gate Perimeter Road, Subic Bay
Freeport Zone, Olongapo City,
2222 ,Philippines

Poland Distributor : Waterfall

Contact Person : Darek
E-mail : darek@waterfall.pl
Phone : 48-600-340-002
Mail : UL. Klimczaka 22D/3, 02-797 Warszawa
Poland PL 7621470585

Scandinavian Distributor : AquaFun AB

Contact Person : Sales Office
E-mail : info@aquafun.se
Phone : 46-0-40-295-300
Mail : Sangleksgatan 4E, 215 79, Malmo,
Sweden

Singapore Distributor :
Divesea Pte Ltd

Contact Person : Fairuz Ahmad
E-mail : team@divesea.com.sg
Phone : 65-85115164
Mail : 3 Coleman Street, #03-22,
Peninsula Shopping Centre
Singapore 179804

South Africa Distributor:
Manex & Power Marine

Contact Person : Gavin Jones
E-mail : gavin.jones@manex.co.za
Phone : 27-021-511-7292
Mail : 9 Paarden Eiland Road, Paarden Eiland,
South Africa

Switzerland Distributor :
Tiefenstein AG, Unterwasserwelten

Contact Person : Garry Stuber & Erwin Rudolf
E-mail : bigblue@tiefenstein.ch
garrystuber@tiefenstein.ch
Phone : 41-0-715350973
Mail : Seestrasse 19, CH-9326, Horn, Switzerland

Spain Dealer : Gidive Store

Contact Person : Toni Ferrer
E-mail : info@gidivestore.com
Phone : 34-619-735-461
Mail : C/ President Macia, 70
17230 Palamos, Girona
Spain

Spain Dealer : Vellmari Dive Center Pitiusub SL

Contact Person : Manu San Felix
E-mail : manu@vellmari.com
Phone : 34-619-735-461
Mail : Marina De Formentera 14,
07870 Formentera, Spain

Turkey Distributor : K Pro Doga Sporlari
Malzemeleri Tic. Ltd. STI

Contact Person : Akin Kaftanoglu
E-mail : akinkaftanoglu@yahoo.com
Phone : 90-3124334479
Mail : Bulbulderesi Cad. No.: 23/A, Seyranbaglari,
Ankara, Turkey

U.A.E. Distributor : Senyar Marine Equipment

Contact Person : Abdulla Ai Kindi
E-mail : senyar7@gmail.com
Phone : 971-2-666-9999
Fax: 971-2-643-9960
Mail : P.O. Box 112790, Abu Dhabi, U.A.E.

United Kingdom / Ireland Distributor :
Liquid Sports Ltd.

Contact Person : Alastair Ansell
E-mail : alastair@liquidsports.co.uk
Phone : 44-0-7585-935522
Mail : 11 Stag Lane, Berkhamsted,
Hertfordshire, HP4 1FJ, UK



Headquarters :

Bossk International Company Limited

Contact Person : Oscar Tong

E-mail : oscar@bigblue.com.hk

Phone : 852-3568-0773

Fax: 852-3998-3127

Mail : Room 818,8/F, Po Yip Building, 23. Hing Yip

Street, Kwun Tong, Hong Kong

Website : www.bigblue.com.hk

www.bigbluedivelights.com

US Sales Office : BosskUSA / Bigblue Dive Lights

Contact Person : Tim Ratcliffe

E-mail : sales@bigbluedivelights.com

Phone : 727-442-2300

Fax: 727-499-7117

Mail : 1710N Hercules Ave, Suite 103, Clearwater,

FL 33765 USA

Visit Us
on website



Like Us
on facebook

